



Somerset Art Society Inc

Supporting the arts and artists in the Somerset Region SE Qld

Newsletter February 2024

This issue:

Presidents Report

PAGE 01

Join a Group

Info and Links

PAGE 02

Calendar

PAGE 03

Glen Rock Gallery

PAGE 04

Lowood Open Door Gallery

PAGE 05

The Condensery

Somerset Regional Art Gallery

PAGE 06

SASI Workshops

PAGE 07

Group Chat

Group Photos and reports

PAGE 08

Photography Article

PAGE 09

Members Page

PAGE 10

Flyers

PAGE 11

Presidents Ponderings

with Sandi Hook

Happy February everyone! I hope everyone has their artistic batteries charged up ready to go for 2024.

I had a wonderful week at the McGregor Summer School with David Bongiorno doing Anatomical Figure drawing. It was wonderful to work with some fabulous artists would so love to continue figure drawing and if anyone is interested in getting together to do this, please let me know.

The development of the Somerset Studio Artist Trail is underway. If there are artists in the Somerset region who would like to have their studio included, or showcasing work in gallery space for the public, or any other concept, please contact me on president@sasiart.com.au We are at the very beginning of building this project, and together with the Regional Council, we will work to deliver a July Artist Trail for Somerset. It is important to register your interest as soon as possible.

The next General Meeting for SASI is 23rd February, a week later due to the concurrent dates of Deb Mostert workshops. Hopefully, we will see you at the meeting.

Deb's tickets can be booked through The Condensery and they are proving popular. Great opportunity for all.

I look forward to an exciting 2024 filled with art, artmaking and friendship.

Sandi



Join SASI Groups

Click on the LOGO to visit the SASI Website



Join SASI - <https://www.sasiart.com.au/memberships>

SASI Members are active in supporting the arts and artists in SE Qld. Members enjoy free exhibition curation at Glen Rock Gallery Esk, discounted or free workshops, participation in SASI Members Market Stalls and a monthly email newsletter.

SASI Contacts : <https://www.sasiart.com.au/contact>

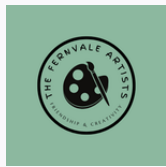
For more info Click the photo to visit SASI website Groups page



Join the Mount Beppo Artists - Contact: Gwen 0437 197 381

Meeting on Wednesday mornings from 9am until 1pm at Mount Beppo Community Hall, 916 Mount Beppo Rd, Mount Beppo QLD. New members warmly welcomed.

Click on the LOGO to visit The Fernvale Artists Facebook page



Join the Fernvale Artists - Contact Sue White 0407 072 926

The Fernvale Artists meet on Thursdays 9.30am - 12.30pm at the Fernvale Community Hall in Banks Creek Road, Fernvale, or at the Lowood Open Door Gallery. Anyone in the local area is welcome to join them, or just to visit.

For more info Click on the Camera to visit SASI Photography Group page



Join SASI Photography Group

Contact Phil Lister Email plphotographix@gmail.com

We meet at 9:30am every third Thursday at Nash Gallery and Cafe, 212 Ipswich St Esk, January to November, welcoming all skill levels. Friends welcome.

Join Somerset Regional Council Volunteers



Join the Esk Visitor Information Centre Tourism Volunteers
Contact Carole Labram mail@somerset.qld.gov.au

To Apply visit [Volunteer | Experience Somerset](#)

To Apply Visit <https://thecondensery.com.au/about/get-involved/>



Become a Gallery Ambassador at The Condensery
Contact email: mail@somerset.qld.gov.au

Supporting the arts and regional tourism

Join a Somerset Group

<https://www.somerset.qld.gov.au/somerset-arts-culture-directory>

Somerset Arts and Culture Directory

A Somerset Regional Council Initiative supporting the arts and regional tourism



Esk Glen Rock Stitchers Lynne Robson Ph 07 5424 1382

The Glen Rock Stitchers meet every Thursday in air-conditioned comfort at the Anglican Hall, Ipswich Street, Esk. They sew and share ideas and knowledge amongst friends with this common interest.



Calendar of Events

What's on and What's coming up

GALLERIES

Glen Rock Gallery

Friday 5 January - Wednesday 7 February Robbie Greer - Rusticated Art

Friday 9 February - Wednesday 6 March Sue Howard, Susan Wellingham & Shirley Gregor present 'Flow'

Friday 9 February - 9:30am - 10:30am Catered opening of "Flow"

Lowood Gallery

January 31st - February 25th From the Coast to the Country and Everything In Between presented by Liane Battersby, Ron Orr and Gai Lorraine Edmonds
6pm Friday 9th February Opening From Coast to Country and Everything In Between

Summer Workshops at Open Door Gallery

[https://www.facebook.com/photo/?](https://www.facebook.com/photo/?fbid=684686233840203&set=a.405003311808498)

[fbid=684686233840203&set=a.405003311808498](https://www.facebook.com/photo/?fbid=684686233840203&set=a.405003311808498)

The Condensery

Until 18th February

'Remnants | Impressions' by Louis Lim and 'Healing Garden' by Hiromi Tango

Saturday 10th Feb | 11AM - 12PM Artist Talk With Louis Lim

Saturday 24th Feb | 4PM - 6PM Exhibition Opening:

'ĀM / AMMĀ / MĀ MARAM' & 'PILGRIMAGE'

Saturday 24th Feb - 28th April 'ĀM / AMMĀ / MĀ MARAM' & 'PILGRIMAGE'

WORKSHOPS

Friday 9th Feb | 8:30 - 10:00AM Arts Biz Workshop

Sketchbook Workshops with Deb Mostert @ The Condensery:

- 10am to 4pm, Wednesday 14 Feb | **Fully Booked**

- 10am to 4pm, Thursday 15 Feb | **Fully Booked**

- 10am to 4pm, Friday 16 Feb | **Fully Booked**

- 10am to 4pm, Wednesday 13 March

- 10am to 4pm, Thursday 14 March

- 10am to 4pm, Friday 15 March

Register Here - <https://events.humanitix.com/host/the-condensery>

Thursday 9th March - 10th March | 'Sunrise & Sunsets' Don Miller

EVENTS

SASI members are invited to participate in SASI 'Members only' events by email.

OTHER

9:30 am Thursday 15 February 2024, **SASI Photography Group**
at Coffee Roasters, Peters Street, Esk

Friday, 23 Feb, 2024, 9:45 for 10 am start, **SASI General Meeting**
St Agnes Anglican Hall 85 Ipswich St Esk



Glen Rock Gallery

supported by SASI and Somerset Regional Council

ESK VISITOR INFORMATION CENTRE 82 IPSWICH STREET, ESK, QLD 4312
OPEN TUESDAY TO FRIDAY 9-4PM SATURDAY 10-2PM
CLOSED SUNDAY, MONDAYS THE FIRST THURSDAY MONTHLY AND PUBLIC HOLIDAYS

What's Up at Glen Rock

**Shirley Gregor, Sue
Howard & Sue
Wellingham**

FRI 9TH FEB - WED 6TH MAR

Meet The Artist at Glen Rock

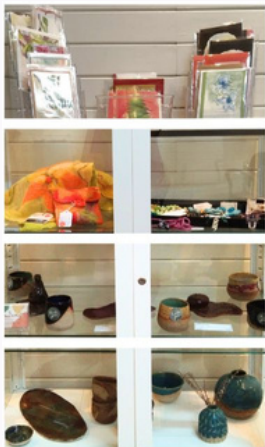
Shirley Gregor, Sue
Howard & Sue
Wellingham

FRI 9TH FEB 9:30 - 10:30AM

In The Display Cabinets at Glen Rock

LOCAL ARTISTS

Coal Creek Pottary
Exquisite Cards and Gifts



What's Coming to Glen Rock Gallery

MARCH
Gerard de Roo

APRIL
The Fernvale Artists

'Flow' by Shirley Gregor, Sue Howard & Sue Wellingham

9TH FEBRUARY - 6TH MARCH

Welcome to Flow, an extraordinary exhibition that shows the synergy between the fluidity of watercolours and the immersive state of creativity known as "flow." Presented by three highly committed artists, this collection invites you to embark on a journey through the captivating realms of paint and passion.

The artists employ the inherent liquidity of watercolour to guide the organic "flow" of paint across the canvas, echoing the spontaneity and unpredictability of nature itself. They also recognize "flow" as a transcendent state experienced by artists deeply engrossed in their craft. The result is not just a finished artwork, but a testament to the profound joy and fulfilment derived from the artistic journey.

In "Flow," the artists invite you to immerse yourself in the dual meanings of their chosen theme – the dynamic interplay of watercolours and the blissful state of creative absorption.



Sue Howard



Susan Wellingham



Shirley Gregor

View the full exhibition at Glen Rock Gallery, Esk Visitor Information Centre 82 Ipswich Street, Esk, QLD 4312 Tues-Fri 9-4 Saturday: 10-2

[CLICK to EXPLORE
Glen Rock Gallery online](#)



Lowood Open Door Gallery

A Lowood Lions Project

RAILWAY STREET, LOWOOD, QLD 4311
THUR 9:30AM - 12:30PM SAT/SUN 9:30AM - 2PM

Trudy and Garry Mudge's wonderful Christmas exhibition at the Open Door Gallery has ended, and in February the gallery will feature Gai Edmonds, Liane Battersby and Ron Orr, all members of the Fernvale Artists. This very special exhibition, From the Coast to the Country and everything in between, can be visited at weekends and Thursday mornings from Thursday 1st through to Sunday 25th February, with a special opening event on Friday evening, 9th February, from 6.00pm.

Very especially featured will be long standing SASI member Ron Orr, who has given so much of his time over the years to hanging exhibitions in Glen Rock Gallery, the Condensery, and the Lowood Open Door Gallery, to being a SASI committee member and to giving valued support to the Fernvale Artists. Sadly, in recent years Ron's vision has declined devastatingly and painting is becoming increasingly difficult. This, probably his last exhibition, will feature both his past and some of his current work. Our thanks, from SASI, Fernvale Artists and the three galleries, go to Ron for his years of strength, ability, friendship and care.

In The Cabinets at Lowood



Liane Battersby



Gai Edmonds



Ron Orr



The Condensery

Somerset Regional Art Gallery

29 FACTORY ROAD TOOGOOLOWAH QLD 4313
WED TO SUN 10AM – 4PM CLOSED PUBLIC HOLIDAYS.

What's Up at the Condensery

Healing Garden

9 DEC - 18 FEB 2024

Remnants | Impressions

9 DEC - 18 FEB 2024

Artist Talk With Louis Lim

10 FEB | 11AM - 12PM

'ĀM / AMMĀ / MĀ MARAM' &
'PILGRIMAGE'

24 FEB - 28 APR

EXHIBITION OPENING
'ĀM / AMMĀ / MĀ MARAM'
& 'PILGRIMAGE'

24 FEB | 4PM - 6PM

Joint Exhibition Opening Saturday 9 December 1pm to 4pm
'Remnants | Impressions' by Louis Lim and 'Healing
Garden' by Hiromi Tango

HEALING GARDEN | HIROMI TANGO

9 DEC 2023 – 18 FEB 2024

Healing Garden at The Condensery is a site-responsive project created with, for and by the Somerset community, in collaboration with internationally renowned Japanese-Australian artist Hiromi Tango.

REMNANTS | IMPRESSIONS | LOUIS LIM

9 DEC 2023 – 18 FEB 2024

Remnants | Impressions continues artist Louis Lim's interest in the diversity of the human condition, through non-fictional visual storytelling and conceptual photographic portraits.

'ĀM / AMMĀ / MĀ MARAM' & 'PILGRIMAGE'

24 FEB – 28 APR

Join us to celebrate the opening of two new exhibitions: ām / ammā / mā maram by Sancintya Mohini Simpson and Pilgrimage: Remote Animism & Ornamental Displacements by Miguel Aquilizan and Jessica Dorizac.

In ām / ammā / mā maram, Sancintya Mohini Simpson makes visible the histories of indentured Indian women that remain marginal or erased in colonial archives. A first-generation Australian and descendant of labourers sent from the port of Madras (now Chennai), India, to work on sugar plantations in the British colony of Natal (now KwaZulu-Natal), South Africa between 1863 and 1911, Simpson's exhibition traces her family's journey through the use of materials common to these places and histories – such as sugarcane and mango.

Located in The Condensery's Bomb Shelter, Pilgrimage: Remote Animism & Ornamental Displacements forms part of a continuing series from the collaborative practice of husband and wife artists, Miguel Aquilizan & Jessica Dorizac. In their life and work they navigate through culture, colonization, history, geography, folklore and faith as contemporary Australian Filipinos. In the Pilgrimage series, they explore the interconnected themes of identity, globalisation, culture, colonization and resistance through a playful sculptural installation. This iteration is a new body of work produced in Australia, since Miguel Aquilizan & Jessica Dorizac have returned from practicing in the Philippines.

Registrations are required for catering purposes. Please RSVP below.

[RSVP](#)

EXPLORE
The Condensery Website

CLICK to EXPLORE
<https://thecondensery.com.au/>

Condensery Gallery Manager Madeline Brewer mail@somerset.qld.gov.au or
Contact Email thecondensery@somerset.qld.gov.au

To recommend a Workshop
with a particular tutor and/or in
a specific media

**Contact: SASI Art Workshop
Coordinator**

Joanne Hegney
workshop@sasiart.com.au

**Artists are most welcome
to apply to present a
workshop**

The Deb Mostert Everyday Sketchbooks project

Hosted by The Condensery, Everyday Sketchbooks is a collaborative exhibition of work by Deb Mostert and the Somerset arts community. Artists and art groups in the Somerset region are invited to participate in the Deb Mostert Everyday Sketchbooks workshops during February and March 2024. Workshop participants will be invited to contribute sketchbooks to the Everyday Sketchbooks project which will then be exhibited at The Condensery.

FEBRUARY Everyday Sketchbook Workshops BOOKED OUT

Register online for March Sketchbook Workshops with Deb Mostert

Held at: The Condensery, Somerset Regional Art Gallery

29 Factory Rd, Toogoolawah QLD 4313, Australia

- **WEDNESDAY 13 MARCH 10am-4pm Materials and lunch provided**
 - In this session we will focus on everyday nature drawing. Our subjects will include found natural objects, taxidermy and walking trips around The Condensery. Please bring sun protection and a water bottle. [REGISTER](#)
- **THURSDAY 14 MARCH 10am-4pm Materials and lunch provided**
 - In this session we will focus on sketchbook drawing strategies to capture the figure from life. We will learn both fast notations and longer poses for more considered portraits. [REGISTER](#)
- **FRIDAY 15 MARCH 10am-4pm Materials and lunch provided**
 - In this session we will look at indoor settings, including 'still life' and outdoor landscapes, as well as how to best capture the character of an environment. Please bring sun protection and a water bottle. [REGISTER](#)

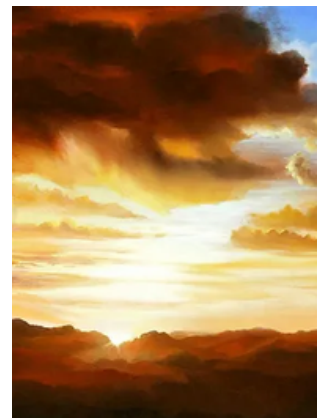
NOTE:

- *These workshops are only open to artists living in the Somerset region. Please email thecondensery@somerset.qld.gov.au if you have any questions regarding eligibility.*
- *Registrations are essential.*
- *Please advise if you have any access or dietary requirements.*
- *Interested artists are welcome to book into more than one workshop pending availability.*

Sunrise & Sunsets with Don Miller

Join the two-day "Romance The Sunset in Paint" workshop, perfect for artists of all levels. Dive into the vibrant world of sunset painting, exploring a spectrum of oranges, crimsons, and golds. Day 1 focuses on sketching, washes, and starting your first sunset painting, while Day 2 deepens your skills with a second piece, teaching color mixing, medium use, and brush and palette knife techniques. Embrace this chance to capture the beauty of sunsets on canvas in a supportive, creative environment. Join for this exciting opportunity to bring the beauty of sunsets to your canvas!

[Click here for more information](#)



Mount Beppo Art Group

Welcome back! Mount Beppo Art Group returns to Mt Beppo Hall at 9am on Wednesday 7 February ready for the February Artist Challenge: COLLAGE. Photos of the results will be in the March newsletter.

Three of our fellow artists; Susan, Shirley and Sue are treating us to a joint exhibition at the Glen Rock Gallery in February. We hope to see you at their catered opening: 9:30-10:30am Friday 9 February.

Fernvale Artists

So good to see everyone after the Christmas break. Our Christmas party at Jenny's was lovely -delicious lunch, carols around the piano, just about everyone there. We wish all members a lovely creative year in 2024.

On 24 March a day in Toogoolawah is planned, starting with a visit to the Phil Whatmore gallery, previously arranged for November but cancelled at the last minute, followed by a picnic lunch and an afternoon's outdoor painting or sketching. Any members of SASI who would like to take advantage of the gallery's being open on that day would be very welcome to join us.

In February three of our members, Gai Edmonds, Liane Battersby and Ron Orr will be featured at the Lowood Open Door Gallery, with a lovely collection of paintings, pottery and beautiful jewellery. Opening event will be on Friday evening, 9th February. This exhibition will especially feature long standing member of the Fernvale Artists Ron Orr, a constant source over the years of strength and support to our group. Sadly, Ron's failing eyesight is making painting increasingly difficult, so this exhibition gives us a very important opportunity to see his work. Our thanks to Gai and Liane for the work they have put into organising this special event.

In April the Glen Rock Gallery in Esk will feature the Fernvale Artists, and in July we will be the featured group at the Lowood Open Door Gallery. Definitely no time for sitting around with nothing to do !!



Photography Article

How much is that photo in the window?

Welcome to 2024! I hope everyone had a great Christmas and are enjoying the New Year so far!

To start off this years series of photography articles, I thought I would talk about one of the more burning questions photographers and artists alike may struggle with - if you're selling your work, how do you price it, what do you sell your creative masterpiece for?

I have had this discussion with other photographers and there are as many ideas, and frustrations, as there are people you talk to. So what do you do - use some formula or price it on what it's worth to you? How do you manage an emotional tie you might have with a photo or art piece you want to sell? I recently watched an online discussion on this very topic, run by a well established art business in the USA. A very brief summery of what came out of this session:

1. No-one cares for the time you take to produce a print. You may have spent hours editing an image you love, let alone all the time you may have taken to get to a location, waited for the right light and so on - people buying your photos/art may not see that and in my experience, it rarely factors into their decision to buy.
2. Partner with local businesses to get your work out there.
3. Establish a price list and stick to it.
4. Some do not's to think about:
 1. Never lower your prices once you have established your price structure.
 2. Never price your work differently at two different markets - it reflects indecision.
 3. Never apologise for your prices - if you have worked them out, stick to them.
 4. NEVER raise prices at a venue where wealthy people go to, then return to your usual prices later. If one of the wealthy people buys your work, then visits a market where you have returned to your usual price, imagine what they will think of you.

Now, having said all that, how do you actually decide what price you place on the blood, sweat and tears you shed? In the online discussion it was suggested to set a cost per square inch, in their case \$1 US when starting out. However, this approach can be "inconsistent" when comparing very small pieces with large pieces as I found out ages ago when I applied this method, it was just too variable to be of any value to me.

So what I did when I started was to do extensive costings to determine what a matted print actually cost me to make and have in my hands. This was the basic starting point, it included everything I'd use - paper, matboard, foamcore, ink, plastic storage sleeves, mounting hardware, hinge tape and so on. Then I thought about establishing standard markup's to cover my time. I'd suggest anyone who is starting out go through this exercise - put pen to paper so you have something to refer to and as time goes on, you can modify it as needed.

And when arrive at your prices, are you comfortable with them, or is the final price going to be out of the reach of the market you are targeting, or are you just looking for cost recovery? Have a look at what other creatives are charging - are you in a similar bracket, are you charging too much/too little for your experience/quality level? Ultimately, how you do this is up to you, there is no magic formula that fits all.

If you have any comments or questions, let me know.

Phil

PS - Next photo coffee morning catchup will be at the Coffee Roasters, Peters Street, Esk on Thursday February 15th 9:30am. See you there.

SASI Members Page

Dedicated to members, for members, from members.

Recommended by Members



Ipswich Art Society

Saturday Morning Casual Painting
SECOND SATURDAY of each MONTH 9.00AM TO 1.00PM

The Old Court House (Ginn street rear entrance) cnr East and Roderick Streets , Ipswich.

Come along to our Untutored Art Group held at the Old Ipswich Courthouse to enjoy some quality time and share ideas and interact with other artists.

Cost: \$5.00 for Members and \$10 for non members with 'join on arrival' facility.
Coffee/tea is provided , bring your lunch.

Local Artist—available for commission artwork.

Always living in our rural district, there is a special interest in travelling through our range of beautiful Australian landscapes, using varieties of colours and techniques to portray them on canvas.



Noela Lowien
Artist & Local Historian

~ Oil ~ Acrylic ~ Watercolour
~ Pastel ~ Graphite ~ Ink

Mail ~ 5 Deillar Street Kilcoy, QLD 4515
Telephone ~ 0455 617 193
Email ~ njlowien@gmail.com
Instagram ~ #noelalowienartist
Facebook ~ Noela Lowien Artist

Riot Art and Craft Stores
are now stocking
quality artist supplies
<https://riotstores.com.au>



Photography/Art Suppliers

If you're setting up to photograph something and need flowers to fill in space, or to be a focal point, consider giving Flowers by Felicity a call and discuss your requirements. Located just out of Esk on the Hampton Road.



Flowers by Felicity

Qualified Florist: 25+ Years

Plants, Flowers & Arrangements
for all occasions



Felicity Maden,

emervale4@activ8.net.au

0413 133 168

#FlowerPower



creativebug

STREAM ART & CRAFT
CLASSES FOR FREE AT
YOUR LOCAL LIBRARY

LEARN HOW



Hassel St Esk Qld

facebook.com/BargainManiaEskQLD/

SASI appreciates the support of Esk Fruit Shop for displaying SASI brochures and our Glen Rock Gallery posters.

From the *Coast* to the **COUNTRY**

and everything in between

Showcasing the art of three multi-award winning
local artists

Thursday February 1st - Sunday February 25th
Free Entry

Meet the artists and watch them work



Liane Battersby



Ron Orr



Gai Edmonds



45 Railway Street,
Lowood, QLD, 4311

Opening Hours

Thursday: 9:30am-12:30pm

Saturday: 9:30am- 2:00pm

Sunday: 9:30am-2:00pm