



# Somerset Art Society Inc

Supporting the arts and artists in the Somerset Region SE Qld

## Newsletter June 2025

### This issue:

#### Presidents Report

PAGE 01

#### Join a Group

##### Info and Links

PAGE 02

#### Calendar

PAGE 03

#### Glen Rock Gallery

PAGE 04

#### Lowood Open Door Gallery

PAGE 05-06

#### The Condensery

##### Somerset Regional Art Gallery

PAGE 07

#### SASI Workshops

PAGE 08

#### Group Chat

##### Group Photos and reports

PAGE 09-11

#### Members Page

PAGE 12

### Off the Hook - President's Report

with Sandi

After the busyness of being part of Volatile Terrain with the Inaugural Harvest Biennial, including Artists Talks and Workshops, life has settled a little ... until the next chapter! The work I exhibited in The Condensery, Archaeological Dig – Layers of meaning, has been accepted as a finalist in the Mackay Australian Artist Book Awards, with 53 other artists. I was encouraged by the curator Cara-Ann Simpson to enter an art prize and was very surprised and delighted to be accepted.

Even though my world has largely centred around The Condensery for quite some time, our other two art venues, Glen Rock Gallery and Open Door are consistently mounting new work each month. They are a credit to Somerset Artists and a joy for our community.

And speaking of a credit to the artistic industry in Somerset, three artists: Cassandra Hodgins, Karen Leahy and Marita Reynolds provided a well-attended morning of three workshops in watercolour, pastel and coloured pencil and to top it off, lunch! This is a perfect introduction to those who would like to explore mediums lead by experts in their field. I've heard only great reports from participants! Perhaps those who attended may be interested in working with SASI Artists?

Welcome to new SASI members Tracey Chadwick, Susan Janz and Sharon Lee! May your creative pursuits be wonderful.

In the month of May, Sharon Lee is exhibited her work at Glen Rock Gallery in Esk.



Sharon's bright and quirky artwork has a deeper message in her exhibition Together.

Through her paintings, she questions the delicate symbiotic relationship between nature, humans and the environment in a volatile world. Her paintings sing of delicate subjects with the innocence of children's games which may be interpreted as somewhat more conflicting. The heavy clouds in the background give an ominous aura to the work. The paintings are beautifully crafted.

I wish you all a creative June!

Sandi

## Join SASI Groups

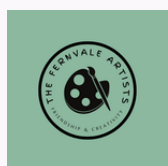
Click on the LOGO to visit the SASI Website



For more info Click the photo to visit SASI website Groups page



Click on the LOGO to visit The Fernvale Artists Facebook page



For more info Click on the Camera to visit SASI Photography Group page



For more info Click on the MUSOS Logo



Join SASI - <https://www.sasiart.com.au/memberships>

SASI Members are active in supporting the arts and artists in SE Qld. Members enjoy free exhibition curation at Glen Rock Gallery Esk, discounted or free workshops, participation in SASI Members Market Stalls and a monthly email newsletter.

Join the Mount Beppo Artists Email: [Frances Avent \(favent427@gmail.com\)](mailto:favent427@gmail.com)

Meeting on Wednesday mornings from 9am until 1pm at Mount Beppo Community Hall, 916 Mount Beppo Rd, Mount Beppo QLD. New members warmly welcomed.

Join the Fernvale Artists - Contact Sue White 0407 072 926

The Fernvale Artists meet on Thursdays 9.30am - 12.30pm at the Fernvale Community Hall in Banks Creek Road, Fernvale, or at the Lowood Open Door Gallery. Anyone in the local area is welcome to join them, or just to visit.

Join SASI Photography Group  
Contact Phil Lister Email [plphotographix@gmail.com](mailto:plphotographix@gmail.com)

If anyone would like to join the Photography Group or has questions about photography in general, please contact Phil

Join SASI MUSOS  
Contact Andrea Oxenford 0459 031 895

SASI Musos will meet on Monday mornings from 9am until 12 noon at St Agnes Anglican Hall, Ipswich St, Esk, starting on 3 February 2024. Players of all instruments are welcome at this friendly weekly session.

## Join Somerset Regional Council Volunteers

Join the Esk Visitor Information Centre Tourism Volunteers  
Contact Carole Labram [mail@somerset.qld.gov.au](mailto:mail@somerset.qld.gov.au)

To Apply visit [Volunteer | Experience Somerset](#)

Become a Gallery Ambassador at The Condensery  
Contact email: [mail@somerset.qld.gov.au](mailto:mail@somerset.qld.gov.au)

Supporting the arts and regional tourism

To Apply Visit  
<https://thecondensery.com.au/about/get-involved/>



## Join a Somerset Group

<https://www.somerset.qld.gov.au/somerset-arts-culture-directory>

Somerset Arts and Culture Directory

A Somerset Regional Council Initiative supporting the arts and regional tourism

Esk Glen Rock Stitchers Lynne Robson Ph 07 5424 1382

The Glen Rock Stitchers meet every Thursday in air-conditioned comfort at the Anglican Hall, Ipswich Street, Esk. They sew and share ideas and knowledge amongst friends with this common interest.





# Calendar of Events

What's on and What's coming up

## GALLERIES

### Glen Rock Gallery

**'Family - Now and Then'**

Presented by the Nicholson, Nicholas, Avent and Thomas Families.  
Friday 7th June to Wednesday 3rd July

### Lowood Open Door Gallery

Lowood Mens Shed - Woodwork

### The Condensery

Cubomancy, Omnishambles and Scripted Permanence.  
3 MAY 2025 – 13 JULY 2025

## WORKSHOPS

See workshop page for details on Workshops

## EVENTS

### Glen Rock Gallery

Meet the Artists Friday 7th June 11am

## OTHER

SASI Committee Meeting Friday 19 June, 9:45 for 10am at Shirley's

**SASI Musos sessions at St Agnes Hall Esk.**  
Mondays 9am - 12 noon

Small Is Beautiful - <https://www.sasiart.com.au/entry-form>



Glen Rock Gallery 82 Ipswich St Esk QLD

## Small is Beautiful 2025

Competition and Exhibition 5 July – 6 August 2025

**4 Categories:** Environment | Fauna | Flora | Portrait

**2D**



and

**3D**



up to 30cm



**\*increased to up to 5 entries per artist\***



**\*Entry extended to Sat 7 June 2025\***



SCAN ME





# Glen Rock Gallery

supported by SASI and Somerset Regional Council

ESK VISITOR INFORMATION CENTRE 82 IPSWICH STREET, ESK, QLD 4312  
 OPEN TUESDAY TO FRIDAY 9-4PM SATURDAY 10-2PM  
 CLOSED SUNDAY, MONDAYS THE FIRST THURSDAY MONTHLY AND PUBLIC HOLIDAYS

## What's Up at Glen Rock

### Family Now and Then

FRI 6TH JUNE - WED 3RD JULY

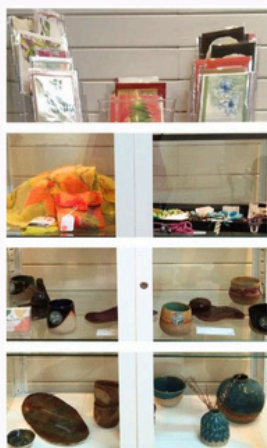
### Meet The Artists

11AM 7TH JUNE

## In The Display Cabinets at Glen Rock

### LOCAL ARTISTS

Coal Creek Pottery  
 Exquisite Cards and Gifts



## What's Coming to Glen Rock Gallery

JULY

Small is Beautiful

AUGUST

Anne Digton

SEPTEMBER

Susan Wellingham

## 'Family Now and Then'

Presented By the Nicholson, Nicholas, Avent and Thomas families

6TH JUNE - 3RD JULY

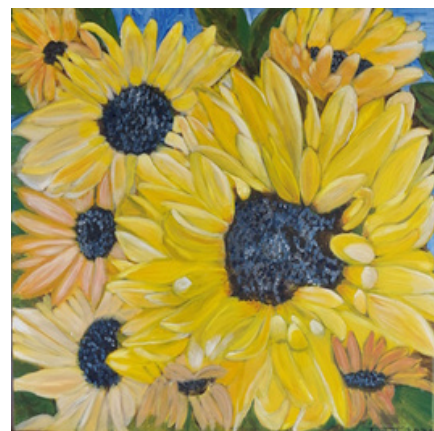
Introducing a kaleidoscope of talent!

The Nicholson, Nicholas, Avent and Thomas families represent six generations of creativity. This eclectic exhibition expresses artistic styles from traditional to contemporary, in a diverse array of mediums including painting, drawing, printmaking, photography, textiles, sculpture and installation.

The oldest work is a bark painting by Peter Nicholson's great grandmother, Lena Nicholson and the most recent work, a painting by Jane Nicholson's 8 yr old niece Ysabelle Avent.

Art works for "Family- Now and Then" have come from as far away as Vietnam and Thornleigh in Sydney.

Enjoy viewing the variety of creative perspectives that a family can produce!



View the full exhibition at Glen Rock Gallery, Esk Visitor Information Centre 82 Ipswich Street, Esk, QLD 4312 Tues-Fri 9-4 Saturday: 10-2

[CLICK to EXPLORE  
Glen Rock Gallery online](#)

# Lowood Open Door Gallery

## A Lowood Lions Project

RAILWAY STREET, LOWOOD, QLD 4311  
THUR 9:30AM - 12:30PM SAT/SUN 9:30AM - 2PM

May exhibition was with Carol Fletcher, Watercolour Artist. Carol was at the Gallery on Saturday the 3rd of May from 10am to 11am for a 'Meet the Artist' session. Many came in to talk to Carol about her approach to this popular medium and feedback from visitors was extremely positive.

The gallery 'Special Event 'Let's Make Art 'Day, was a fabulous success, totally booked out. Participants had a wonderful day and not only enjoyed the creative activity but the social aspect as well. R & K Catering fed us all very well, with leftovers for tea. Cr Sally Jess and Marina Gomide journalist from the Sentinel News attended. This event was heavily subsidised by a generous grant from the Somerset Council and Regional Arts Development Fund, and we greatly appreciate them supporting the gallery and the arts in Lowood. (See images attached)

In May, Cassandra Hodgins did a workshop on 'Plant Print Dyeing on Paper '. The results were an incredible surprise. Great, fun, great company and very informative. You have no idea how things will turn out till you open the little cooked bundles. Surprise! (See images attached)

We also had our Volunteers Thankyou morning tea. Without our volunteers we would not be able to function and do all that Open Door Gallery does. 21 volunteers came and spent a couple of hours meeting other volunteers, welcoming new recruits and just enjoying the great Open-Door vibe with Carol Fletcher's beautiful artwork. We are very appreciative of the time volunteers make to help us stay open and create the friendly hub locals and visitors love to visit. ( See images)

Stay creative,  
Marita Reynolds



## What's Coming to Open Door Gallery

JUNE

Donna Vale  
The Crooked Potter

## In The Cabinets at Lowood





# Lowood Open Door Gallery

## A Lowood Lions Project

RAILWAY STREET, LOWOOD, QLD 4311  
THUR 9:30AM - 12:30PM SAT/SUN 9:30AM - 2PM



## What's On 2025

June	Lowood Men's Shed	Wood work
July	Fernvale Artists	Mixed Media Graphite Arytists other than FAG
August	Lowood High School	Mixed Media

September	Bec & Paul	Photography
October	Breast Care Unit	Fund raiser
November	Noela Lowein & Jodie Lone	Paintings Quilter
December	TBA	



# The Condensery

## Somerset Regional Art Gallery

29 FACTORY ROAD TOOGOOOLAWAH QLD 4313  
WED TO SUN 10AM – 4PM CLOSED PUBLIC HOLIDAYS.

### What's Up at the Condensery

#### CUBOMANCY

3 MAY 2025 – 13 JULY 2025

#### OMNISHAMBLES

3 MAY 2025 – 13 JULY 2025

#### SCRIPTED PERMANENCE

3 MAY 2025 – 13 JULY 2025

## Cubomancy, Omnishambles and Scripted Permanence.

3 MAY 2025 – 13 JULY 2025

**Cubomancy** is an exhibition that uses game-like processes to recontextualise public domain images. Artist Charlie Donaldson trawls online image depositories to accumulate a vast amount of freely-accessible images before constructing narratives based on how they can relate to one another. Through rolling dice, **Cubomancy** explores how the internet gamifies experience and exerts influence on how we perceive and process stories, visual narratives and information.

**Omnishambles** is the 24th solo exhibition from Rockhampton-based artist Jonathan McBurnie. The exhibition presents drawing as a visual response to rapid technological advancement. In contrast to exploitative AI image harvesting, **Omnishambles** instead focuses on collaboration and community, with daily workshops and drop-ins expanding the exhibition. Contributions from The Condensery's visitors will be added to the exhibition as they are created.

**Scripted Permanence** is an installation by Georgia Hayward that uses the history of The Condensery's bomb shelter as prompt to consider how history is stratified. Through mechanistic drawing, Hayward examines how archives serve as utensils that uphold power and nationalism.

**EXPLORE**  
The Condensery Website

CLICK to EXPLORE  
<https://thecondensery.com.au/>

Condensery Gallery Manager Madeline Brewer [mail@somerset.qld.gov.au](mailto:mail@somerset.qld.gov.au) or  
Contact Email [thecondensery@somerset.qld.gov.au](mailto:thecondensery@somerset.qld.gov.au)

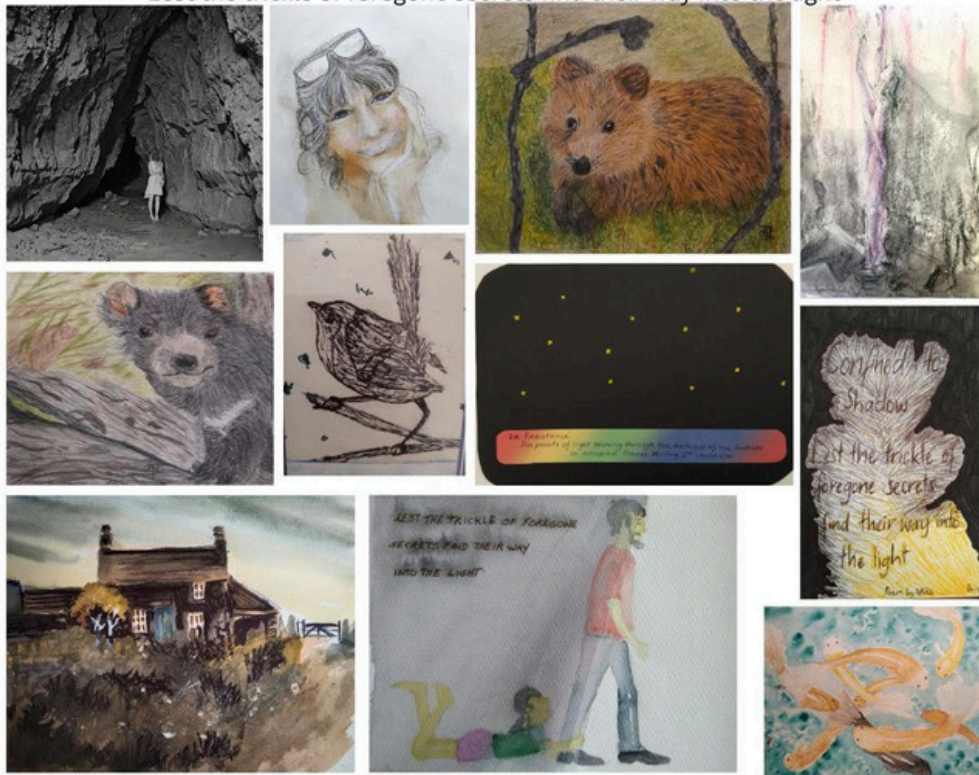
To recommend a Workshop with a particular tutor and/or in a specific media

**Contact: SASI Art Workshop**  
workshop@sasiart.com.au

Artists are most welcome to apply to present a workshop

## Mt Beppo Art Challenge May 2025

Mt Beppo Artists Challenge **May 2025** : Art from poetry 'Confined to Shadow:  
Lest the trickle of foregone secrets find their way into the light'





## Mt Beppo Art Group

Frances Avent is settling into her position of coordinator.

We are getting the bank signatories changed and, after a suggestion from one of our Mt. Beppo members, we are setting up access to equipment and materials necessary to prepare paintings for exhibitions. The equipment and materials will be kept at the hall in our locked cupboard and will be available to the Mt. Beppo members. The equipment and materials are funded by the Mt. Beppo Group and free to members. We hope this will encourage members to exhibit in exhibitions.

Our Wednesday mornings continue to be of benefit to all of us – always something new to learn!

Frances Avent Coordinator



Mount Beppo Art Challenge 'Confined to Shadow' is on the workshop page!

## Fernvale Art Group

After many very quiet, uneventful weeks, the Fernvale Artists recently helped long time member Val Wright celebrate her ninetieth birthday. A wonderful milestone for a wonderful member, celebrated with a lunch at the Brisbane Valley Tavern after art last Thursday. We wish Val many more birthdays to come, and many more years of creativity, both in painting and in her beautiful garden.



Plans are also underway for another group painting trip in September, to Goomburra on the Darling Downs, a very scenic area of farmlands, trees, mountains, creeks. This time our stay has been extended to three nights instead of the usual two, giving two full days of painting, and the chance to paint in different locations. And, as we have enjoyed so much in the last couple of years, some of the Mount Beppo artists have accepted our invitation to join us. Time together to paint and share friendship.

## SASI MUSOS

SASI Musos working on harmonies

Rather than further expanding our repertoire, the SASI Musos have opted to focus on four songs at the moment and work each week to improve the performance of these songs. These songs are Hey Jude, Sound of Silence, Let It Be and Slip Slidin' Away. With this focused approach, we have started adding some harmonies to Hey Jude, which are sounding very effective! In time, the other three songs will include harmonies as well, to improve the overall performance.

We continue to welcome new attendees, each one making their own positive contribution to the group. There is also time each session allocated for players to voluntarily perform for the group. So, if performing a particular song is on your bucket list, we have a supportive appreciative audience waiting for you!

Come along and enjoy a morning with a friendly group of musos.

Your first session is free, then \$5 per session.

Players of all instruments are welcome, including voice. 😊

A promotional poster for SASI Musos. At the top, the SASI logo (a stylized 'S' in purple and blue) is followed by the text 'SUPPORTING ARTISTS AND THE ARTS IN SOMERSET REGION' and 'SOMERSET ART SOCIETY INC. PRESENTS'. The main title 'SASI MUSOS' is in large, bold, dark blue letters. Below it, the subtitle 'A WEEKLY SESSION FOR MUSOS TO PLAY TOGETHER' is in smaller, bold, dark blue letters. The schedule 'EVERY MONDAY (EXCEPT PUBLIC HOLIDAYS) 9AM - 12 NOON ST AGNES HALL, ESK' is listed in dark blue. A purple line of text asks 'Want to know more?' followed by the email 'Email musos@sasiart.com.au'. At the bottom left is a circular logo with 'SASI MUSOS' and a musical staff. To the right is a large, stylized treble clef with a musical staff winding through it, featuring various notes and rests.

**SASI** SUPPORTING ARTISTS AND THE ARTS IN SOMERSET REGION  
**SOMERSET ART SOCIETY INC.**  
PRESENTS

# **SASI MUSOS**

## **A WEEKLY SESSION FOR MUSOS TO PLAY TOGETHER**

**EVERY MONDAY  
(EXCEPT PUBLIC HOLIDAYS)  
9AM - 12 NOON  
ST AGNES HALL, ESK**

**Want to know more?  
Email [musos@sasiart.com.au](mailto:musos@sasiart.com.au)**

**SASI  
MUSOS**



# SASI Members Page

Dedicated to members, for members, from members.

## Recommended by Members



## Ipswich Art Society

### Saturday Morning Casual Painting

SECOND SATURDAY of each MONTH 9.00AM TO 1.00PM

The Old Court House (Ginn street rear entrance) cnr East and Roderick Streets , Ipswich.

Come along to our Untutored Art Group held at the Old Ipswich Courthouse to enjoy some quality time and share ideas and interact with other artists.

Cost: \$5.00 for Members and \$10 for non members with 'join on arrival' facility.

Coffee/tea is provided , bring your lunch.

### Local Artist—available for commission artwork.

Always living in our rural district, there is a special interest in travelling through our range of beautiful Australian landscapes, using varieties of colours and techniques to portray them on canvas.



Hassel St Esk Qld  
facebook.com/BargainManiaEskQLD/

## Lions Club Of Lowood



Now have two places  
for rent

The Lion's Den and the Lowood Open Door Gallery both would be suitable for workshops. Each is equipped with kitchen, toilets, tables and chairs, good lighting.

Reasonable rates

Plenty of parking .

For further enquiries and rates please  
phone Karen

on  
0402 217 912

**Riot Art and Craft Stores  
are now stocking  
quality artist supplies  
<https://riotstores.com.au>**

SASI appreciates the support of Esk Fruit Shop for displaying SASI brochures and our Glen Rock Gallery posters.