



Somerset Art Society Inc

Supporting the arts and artists in the Somerset Region SE Qld

Newsletter October 2023

This issue:

Presidents Report

PAGE 01

Join a Group

Info and Links

PAGE 02

Calendar

PAGE 03

Glen Rock Gallery

PAGE 04

Lowood Open Door Gallery

PAGE 05

The Condensery

Somerset Regional Art Gallery

PAGE 06

SASI Workshops

PAGE 07

Group Chat

Group Photos and reports

PAGE 08-09

Photography Article

PAGE 10

Members Page

PAGE 11

Flyers

PAGE 12+

Rumination and Musings - Reflections of the President

from Sandi Hook

Welcome all to our October newsletter!

Each new day it is stimulating to do interesting and different activities, especially as we are all artists and these activities are outcomes of our creativity. The dominant one on my mind at present was attending my first committee meeting as president, and how lovely to meet and get to know such a warm, welcoming group of hard working, dedicated people.

In a similar vein, I would like to get to know more SASI artists and anticipate visiting and participating in making art with the Mt Beppo artists soon. My hope is to learn more about artists in different communities further afield over the next few months. In this way I'll personally get to know about the needs of our art community.

I look forward to doing the Bruce Griffiths watercolour workshop in October and encourage others to support SASI and join us!

On an entirely different and personal note, I am thrilled that my studio is finished and by the time of publication of the newsletter, I may have power and lights. This large shed will house my lithography and etching presses and associated equipment. Establishing my print studio will keep me busy with many exciting moments every day!! I have a lot of unpacking, planning and setting up to organise.



I wish you joy and happy art making!

Sandi

Join SASI Groups

Click on the LOGO to visit the SASI Website



Join SASI - <https://www.sasiart.com.au/memberships>

SASI Members are active in supporting the arts and artists in SE Qld. Members enjoy free exhibition curation at Glen Rock Gallery Esk, discounted or free workshops, participation in SASI Members Market Stalls and a monthly email newsletter.

SASI Contacts : <https://www.sasiart.com.au/contact>

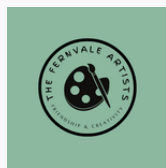
For more info Click the photo to visit SASI website Groups page



Join the Mount Beppo Artists - Contact: Gwen 0437 197 381

Meeting on Wednesday mornings from 9am until 1pm at Mount Beppo Community Hall, 916 Mount Beppo Rd, Mount Beppo QLD. New members warmly welcomed.

Click on the LOGO to visit The Fernvale Artists Facebook page



Join the Fernvale Artists - Contact Sue White 0407 072 926

The Fernvale Artists meet on Thursdays 9.30am - 12.30pm at the Fernvale Community Hall in Banks Creek Road, Fernvale, or at the Lowood Open Door Gallery. Anyone in the local area is welcome to join them, or just to visit.

For more info Click on the Camera to visit SASI Photography Group page



Join SASI Photography Group
Contact Phil Lister Email plphotographix@gmail.com

The photography group have fun learning to take better photographs. New members are very welcome. Activities, including outings workshops and talks, are advertised through the SASI newsletter.

Join Somerset Regional Council Volunteers



Join the Esk Visitor Information Centre Tourism Volunteers
Contact Carole Labram mail@somerset.qld.gov.au

To Apply visit [Volunteer | Experience Somerset](#)

To Apply Visit <https://thecondensery.com.au/about/get-involved/>



Become a Gallery Ambassador at The Condensery
Contact email: mail@somerset.qld.gov.au

Supporting the arts and regional tourism

Join a Somerset Group

<https://www.somerset.qld.gov.au/somerset-arts-culture-directory>

Somerset Arts and Culture Directory

A Somerset Regional Council Initiative supporting the arts and regional tourism



Esk Glen Rock Stitchers Lynne Robson Ph 07 5424 1382

The Glen Rock Stitchers meet every Thursday in air-conditioned comfort at the Anglican Hall, Ipswich Street, Esk. They sew and share ideas and knowledge amongst friends with this common interest.



Calendar of Events

What's on and What's coming up

Happening This Month

GALLERIES

The Condensery

Saturday 14 Oct [intimate immensity & littoralis exhibition opening](#) | artist tour with Anita Holtsclaw 4pm | launch 5pm

Glen Rock Gallery

Friday 6 Oct - Wednesday 1 Nov 2023
Gwen Litfin - 'Smile'

Lowood Gallery

1 – 30 Oct, Fernvale Artists' "In The Pink" Spectacular Exhibition - a fundraiser for Ipswich Hospital Breast Cancer Nurses

<https://www.facebook.com/people/Open-Door-Gallery-a-Lowood-Lions-project/100068964979431/>

(see Galleries pages for more details)

WORKSHOPS

Sunday 1st Oct 1pm - 4pm

Botanical Watercolour Flower with Cassandra Hodgins, Open Door Gallery
Lowood

Saturday/Sunday 14th and/or 15th October

Watercolour Workshop with Bruce Griffiths, St Agnes Hall, Esk
Flyer Attached

EVENTS

Saturday 14 Oct 8am - 3pm

Stall at Marburg Garden and Outdoor Expo

<https://www.facebook.com/MarburgGardenandOutdoorExpo/>

Thursday 2 Nov 9:30am - Thursday 7 Dec 9am

SASI Members Exhibition Glen Rock Gallery

18-19 Nov. SASI members stall at Linville Heritage and Arts Festival.

<https://www.facebook.com/events/281840367982877/?ref=newsfeed>

Saturday 9 Dec, 4:30 – 8:30pm

SASI Members Stall - Toogoolawah Christmas Tree Twilight Market

<https://www.facebook.com/p/Toogoolawah-Christmas-Tree-100064593975875/>

SASI members are invited to participate in particular SASI events by email.

OTHER

14 Oct – Voice Referendum

Friday 20 Oct 9:45 am - SASI Committee Meeting at Shirley's



Glen Rock Gallery

supported by SASI and Somerset Regional Council

ESK VISITOR INFORMATION CENTRE 82 IPSWICH STREET, ESK, QLD 4312
TUES-FRI 9-4 WEEKENDS: 10-2 CLOSED: MONDAYS AND PUBLIC HOLIDAYS

What's Up at Glen Rock

Gwen Litfin

FRI 6TH OCT - WED 1ST NOV

Smile

Gwen Litfin

6TH OCTOBER 2023 - 1ST NOVEMBER 2023

When Gwen found Toogoolawah, she made her house her retirement project home. She enjoyed redesigning the interior and having space for a studio to work on her paintings.

Since joining the Mt Beppo art group, she has been motivated to experiment with different styles and mediums.

Her paintings are very popular as they are about capturing the personalities of her subjects, both wildlife or human.

Gwen's hope is that her paintings make you smile!

What's Coming to Glen Rock Gallery

NOVEMBER
SASI Group Exhibition

DECEMBER
Glen Rock Stickers

JANUARY
Robbie @ RusticatedArt



Expect to find unique treasures.

In The Display Cabinets at Glen Rock

LOCAL ARTISTS
Exquisite Cards and Gifts

Glen Rock Gallery Curators

Jan Godfrey, Sue Howard, Betty Williams,
Gwen Litfin.

Note: the Gallery is closed on the first
Thursday of the month for curating the
new exhibition



Noela Lowein - Cards

Beautiful Cards - original artworks by SASI members!

View the full exhibition at Glen Rock Gallery, Esk Visitor Information
Centre 82 Ipswich Street, Esk, QLD 4312 Tues-Fri 9-4 Weekends: 10-2

[CLICK to EXPLORE
Glen Rock Gallery online](#)



Lowood Open Door Gallery

A Lowood Lions Project

RAILWAY STREET, LOWOOD, QLD 4311
THUR 9:30AM - 12:30PM SAT/SUN 9:30AM - 2PM

What's Up at Lowood

Lynell Jendra

In The Cabinets at Lowood

CREATED BY GARRY
AND TRUDY MUDGE



Lowood Open Door Gallery

So different from the usual exhibitions of paintings, Lynell Jendra's quilts, with their beautiful fabrics, her intricate designs and combinations of colour, made a striking and relaxing change.



Lynell's exhibition has been now replaced by the 'In the Pink' exhibition of pink paintings and crafts, the gallery's fundraising event for breast cancer nurses. Some delightful items have been donated, and all items not sold will be auctioned on Saturday evening, 21st October, from 5.00pm.



 Open Door Gallery
presents
"In the Pink" Spectacular

An exhibition of donated arts and crafts
Visit through the month of October or join us on 21st
October from 5pm for a night of festive fun



All proceeds donated to
Ipswich Hospital Breast Care Nurses

45 Railway Street, Lowood, Qld, Australia, 4311
Thursday 9.30am - 12pm & Sat & Sun 9.30am - 2pm

The gallery has three artists, Karen Leahy, Cassandra Hodgins and Marita Reynolds, who present workshops throughout the year. In September there was Marita's coloured pencil workshop, on Sunday 1st October will be a Botanic Art watercolour workshop by Cassandra, and on Thursday 12th October, from 10.30am, a morning of monoprinting tote bags, to be donated to Ipswich Hospital nurses for their clients, will be available for anyone who would like to help (and learn). Notice of upcoming workshops can always be seen on the Open Door Gallery Facebook page.



The Condensery

Somerset Regional Art Gallery

29 FACTORY ROAD TOOGOOLOWAH QLD 4313
WED TO SUN 10AM – 4PM CLOSED PUBLIC HOLIDAYS.

What's Up at the Condensery

Healing Garden

9 DEC - 18 FEB

Creation Station

7 OCT - 3 DEC 2023

Inspired by Intimate Immensity by Ian Friend and the book chapter by Gaston Bachelard of the same name, explore poetry at The Condensery's Creation Station. In this month's activity, we are prompted to think about space, daydreaming and use our imagination to recompose words and shapes.

EXPLORE
The Condensery Website

INTIMATE IMMENSITY & LITTORALIS EXHIBITION OPENING

Saturday 14 October 2023 | Artist tour with Anita Holtsclaw 4pm |
Launch 5pm

INTIMATE IMMENSITY

7 Oct – 3 Dec 2023

Intimate Intensity is an exhibition of works by Australian artist, Ian Friend.

Ian Friend is best known for his subtle and evocative works on paper. With a fascination for the alchemy of materials and an obsession with handmade paper, Friend's works are made through processes that speak to the artist's reverence for the materiality of making. Repeated layers of ink and gouache are laid down and then inscribed with lines of crayon and pencil. Through a process of push and pull, addition and subtraction, the works gradually move towards resolution and articulate a space that is both intimate and expansive.

Friend's practice also reflects his passion for jazz, classical music, poetry and architecture. The exhibition title is from Gaston Bachelard's *The Poetics of Space*; a seminal text on architecture that looks at poetry, art, and consciousness itself to examine the domestic places that shape and hold dreams and memories. This is reflected in Friend's work which contains the artist's own archaeology of place, time, and memory: the Cretaceous eroding landscape of East Sussex where Friend grew up lives in the chalky pigment; time spent reading philosophy, history and poetry are in the structure of the works and sometimes in the titles; and music can be found in the flow of materials.

Intimate Immensity brings together works created over the last five years and includes works on paper alongside new explorations in painting on panel and sculpture.

ANITA HOLTSCRAW

FEATURED IN THE BOMB SHELTER EXHIBITION SPACE

Littoralis is the Latin term for the seashore and half the scientific name of the endemic native Australian Sheoak tree: *Allocasurina Littoralis*. Filmed on the unceded lands of the Yuggera, Jagera, Turrbal and Koombumerri people, Littoralis merges analogue 16mm moving image film with digital technology to create an expanded view of the landscape that is at once both familiar and strange.

From their roots deeply embedded into the sand to the whistling of the wind through their fronds, Littoralis explores concepts of recollection, memory, simulation, and sight engendered by the framing of the coastal landscape.

Anita Holtsclaw's works explore our relationship to the poetic landscape. Embracing the emotive qualities of moving-image media and sound, she creates embodied works that offer an expanded field of vision for the viewer to navigate. Holtsclaw's work has been exhibited nationally and internationally including the Museum of Brisbane 2022, CARPARK Gallery, Brisbane, 2021; Cité International des Arts, Paris, 2017; The Gallery of Modern Art, Brisbane 2015; The Institute of Modern Art, Brisbane, 2013-14 and Bus Projects, Melbourne, 2012.

CLICK to EXPLORE
<https://thecondensery.com.au/>

Condensery Gallery Manager Rachael Arndt mail@somerset.qld.gov.au or
Contact Email thecondensery@somerset.qld.gov.au

**Contact: SASI Photography
Workshop Coordinator**

Phil Lister
plphotographix@gmail.com

**Contact us to recommend a
Workshop with a particular
tutor and/or in a specific media**

**Contact: SASI Art Workshop
Coordinator**

Joanne Hegney
workshop@sasiart.com.au

**Artists are most welcome
to apply to present a
workshop**

Watercolour With Bruce Griffiths

Saturday and/or Sunday

Watercolour Workshop with Bruce Griffiths

SASI is fortunate to offer members and guests this highly regarded workshop.

Saturday and/or Sunday 14 & 15 October

Class start: 8:30am sharp to 4:30 pm both days

St Agnes Hall 85 Ipswich St, Esk QLD 4312

Fee: SASI Members \$100 per day

Non Members \$120 per day

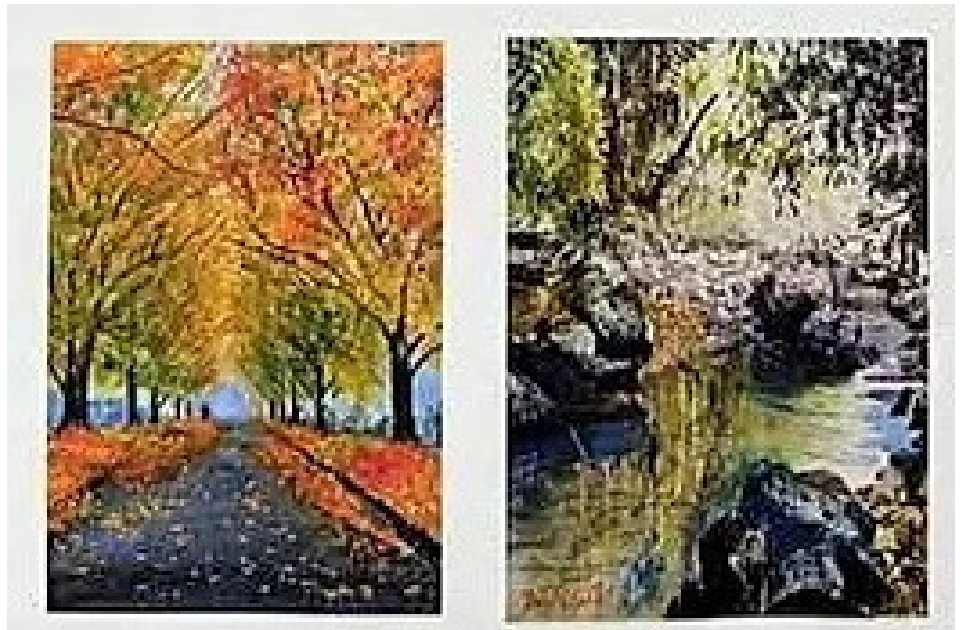
REGISTRATIONS OPEN at <https://www.sasiart.com.au/workshops>

Limited places available

Morning & Afternoon teas provided BYO lunch.

Suitable for painters with brush miles seeking the next level.

For more information on this fantastic workshop please see the flier attached.



Mt Beppo Artists

On Friday 8 September Mt Beppo artists visited Kim Simmons first ever solo exhibition at Glen Rock Gallery. Tranquility was experienced!
Join us on Friday 6th October to be entertained by Gwen Litfin's recent works followed by treats for the tastebuds at Angie's Cafe.

Mt Beppo Art Challenge: September - Monochrome was fun. We hope you enjoy the photos as much as we enjoyed the challenge.



Mt Beppo Art Challenge: October - Circles

Fernvale Artists

Highlight of the month of September for the Fernvale Artists was a wonderful weekend portrait workshop with Don Milner, a workshop which had been cancelled in 2021 due to Covid, and which at last we were able to enjoy. We ended up with only ten participants due to last minute illnesses and other commitments, but ten is a good number to share the attention of a teacher, and challenges which at first seemed beyond us were achieved. We all gained skills, knowledge and confidence and hope that we will be able to invite Don back on another occasion.

Marita and Sandi, end of day one, before colour was added. And Karen's final result. September has also been a month of preparation for the Open Door Gallery's 'In the Pink' exhibition in October, and for the lovely Marburg Black Snake Creek Festival. So many pink paintings – flamingos, flowers, even a pink tiger, all donated to the gallery to be sold to raise funds for breast cancer nurses at the Ipswich Hospital.

Several members entered paintings in the Black Snake Creek Art awards, with some good results. Special mention should be made of Gai Edmonds kind help with the setting up and running of this event.



The Fernvale Artists hard at work.

Philosophical Ramblings of a Wandering Photographer

It would be a bit cliché if I said “It all started in my childhood” but realistically that’s where it really did start. I grew up on a 6,000 acre cattle property, which comprised two holdings. The home block was 2,000 acres and this was my backyard. Dry creek beds, sandstone hills with caves, forested areas, isolated trees, dams, wildflowers and a multitude of birds and animals. I remember as a child wandering through this place by myself, exploring, discovering and, unknown to me at the time, gaining an appreciation of what God had created and had firmly dropped in front of me. Summers with the distant haze of bushfires, cicadas trying to deafen me, eating ice cream on the lino floor in the kitchen, afternoon storms that back then you could almost set your watch by they were that regular, and the endless inundation of moths around the kitchen light at night. It was simply an amazing time.

Fast forward two score and a lot more years, I find myself in similar circumstances. Well, maybe not exactly similar, the cicadas seem a bit quieter now (maybe their evil plan worked!). To some extent I guess I’m reliving that first love of discovery and exploration, but this time with a camera, treading along bush tracks with the expectation of an exciting scene just around the next corner. Sometimes this eventuality manifested, but more often than not, that expectation evaporated into “Oh well, maybe the next corner”.

Such was a recent walk I did with a very good friend. We drove to where the rail trail crosses the Esk-Gatton road, parked the car and began our walk back into town. We set out on foot before sunrise but only walked about 500 yards (yeah, I’m that old!) before cameras were on tripods and shutters clicking on the wonderful foggy dawn where the sunrise was starting to warm the rolling hills to the west. Happy with high expectations for the rest of the morning we packed our collection of cameras and lenses and set off again. Around the next corner. And then the next. And the next. Photographically a lot of this track is unfortunately quite disappointing. No more sweeping landscapes, no amazing trees that stood out from the rest, even the trestle bridges were either cluttered with worksite witches hats, or just didn’t have that element of photographic uniqueness. Just a trail surrounded by short scrubby trees with the inescapable presence of the lantana understory here and there.

After we arrived at Angies and happily had our (late) morning coffee and chatted about the little trek just completed, I started to think about what I had just experienced. Was it a disappointing few hours photographically - sure, but that’s my life as a landscape photographer, but it might not be *everybody’s*. Someone else may find total bliss negotiating the stoney track and happily snapping their camera at *their* new discoveries.

Then I realised that my perspective of the morning may have been slightly off track (no pun intended... well, maybe a little). I expected to see all these wonderful photo opportunities, but I failed to acknowledge what I had just done.

A wonderful cool morning walk along a bush track, with the scent of wattles flowering, birds singing in the trees around us, no-one else around (except for some maniacal suicidal bike rider that had forgotten where his little handlebar bell was!) and sharing conversation with a great friend. And I realised that walking on these dusty tracks with the sole purpose of getting that amazing photo belittled the bigger and more significant picture of experiencing what I was..well, experiencing. Getting the photo is not the be-all and end-all of getting out, just getting out and maybe capturing a great photo is a better way of looking at what we do.

And inevitably I reminisce again to when I was a kid on a journey of discovery in the countryside where I grew up, and smiled thinking you can take the kid out of the bush, but you can never take the bush out of the kid.

Happy roaming.

Phil

SASI Members Page

Dedicated to members, for members, from members.

Recommended by Members



Ipswich Art Society

Saturday Morning Casual Painting

SECOND SATURDAY of each MONTH 9.00AM TO 1.00PM

The Old Court House (Ginn street rear entrance) cnr East and Roderick Streets , Ipswich.

Come along to our Untutored Art Group held at the Old Ipswich Courthouse to enjoy some quality time and share ideas and interact with other artists.

Cost: \$5.00 for Members and \$10 for non members with 'join on arrival' facility.

Coffee/tea is provided , bring your lunch.

Local Artist—available for commission artwork.

Always living in our rural district, there is a special interest in travelling through our range of beautiful Australian landscapes, using varieties of colours and techniques to portray them on canvas.



Noela Lowien
Artist & Local Historian

~ Oil ~ Acrylic ~ Watercolour
~ Pastel ~ Graphite ~ Ink

Mail ~ 5 Dellar Street Kilcoy, QLD 4515
Telephone ~ 0455 617 193
Email ~ njlowien@gmail.com
Instagram ~ #noelalowienartist
Facebook ~ Noela Lowien Artist

A selection of
Mont Marte Artist Supplies
are available at
Toogoolawah
Home Timber and Hardware
Contact Donna Phone: 5423 1222
Cressbrook News and Stationery
Contact Mark or Pauline Phone: 54231396



Photography/Art Suppliers

If you're setting up to photograph something and need flowers to fill in space, or to be a focal point, consider giving Flowers by Felicity a call and discuss your requirements. Located just out of Esk on the Hampton Road.



Flowers by Felicity
Qualified Florist: 25+ Years
Plants, Flowers & Arrangements
for all occasions



Felicity Maden,
emervale4@activ8.net.au
0413 133 168
#FlowerPower



creativebug
STREAM ART & CRAFT
CLASSES FOR FREE AT
YOUR LOCAL LIBRARY

LEARN HOW



**BARGAIN
MANIA**
Discount Variety Stores
Hassel St Esk Qld
facebook.com/BargainManiaEskQLD/

Riot Art and Craft Stores
are now stocking
quality artist supplies
<https://riotstores.com.au>

SASI appreciates the support of Esk Fruit Shop and Angie's Country Cafe, who display SASI brochures and our Glen Rock Gallery posters.

WATERCOLOUR TRAVEL WORKSHOPS 2023 WITH BRUCE N. GRIFFITHS

WATERCOLOUR WORKSHOPS

“ALL ABOARD” as we sail into 2023 with established prize winning artist Bruce Griffiths.

Bruce is offering curriculum based watercolour workshop for artist groups seeking tips and techniques to take them to the next level. Aimed at those with some brush mileage beyond beginnings. You will explore the natural beauty of Australia and look within the subject seeking out the stories.

Expect to be challenged and to have fun. Bruce will share his enthusiasm, knowledge & learned skill in the watercolour medium. Learn what it takes to add emotional content to a scene through instruction & constructive critique, and how to put your personal stamp on the work.

You will canvas a possible range of subjects from simple compositions of seascapes, landscapes, street scenes, sea & country all. Your direction will be that of a storyteller. Each student receives personal attention. Practical painting demos, your own painting time and assistance hands off and hands on as each student requires. Learn to simplify and loosen up your watercolour techniques.

“Attending workshops & classes will quicken your journey.” Recommended materials list will be provided. Bruce has worked with world leaders in watercolour & will offer techniques & tips to master this exciting medium. Bruce was Grand Champion of Paintings Toowoomba Royal Show 2022 and has 20 years of crafting his direction & style, multiple prize credits, 16 solo exhibitions and numerous joint exhibitions, it is now time to share to take your group to the next level. We will travel into new realms!



BRUCE GRIFFITHS WATERCOLOURS

www.brucegriffithswatercolours.com.au

brucengriffiths@yahoo.com.au 0403 346229



**An invitation
to
participate in the
Open Door Gallery's
“IN THE PINK
EXHIBITION”**

Being held in the month of October 2023

**This exhibition aims to support breast cancer nurses
at Ipswich Hospital, who are caring for clients
diagnosed with breast cancer.**

100% of donations will be donated to this cause

How you can be involved

Donate a pink inspired artwork, painting, sculpture, craft. It can be totally pink, pink in it somewhere or even framed in pink. Your imagination is limitless.

You can donate more than one but quality over quantity is preferred.

Any Size up to a maximum of 1mx1m.

Any unsold artwork will be returned to the artists.

Accepting your donations at the gallery now during opening hours. Donations being accepted till the 10th of September 2023.

*Open Door Gallery
45 Railway Street, Lowood.*