



Somerset Art Society Inc

Supporting the arts and artists in the Somerset Region SE Qld

Newsletter December 2022

This issue:

Presidents Report

PAGE 01

Join a Group

Info and Links

PAGE 02

Calendar

PAGE 03

Glen Rock Gallery

PAGE 04

Lowood Open Door Gallery

PAGE 05

The Condensery

Somerset Regional Art Gallery

PAGE 06

SASI Workshops

PAGE 07

SASI Members Stall

PAGE 08

Group Chat

Group Photos and reports

PAGE 09

Basket Weaving Workshop

PAGE 10

Photography Article

PAGE 11

Members Page

PAGE 12

Various Flyers

PAGE 13-14

President's Ponderings

from Shirley Gregor

Hello everyone,

We had a SASI General meeting on Friday 18 November and that went well. Most of the items we discussed feature somewhere else in this newsletter, including coming exhibitions at our regional galleries, ideas for future workshops and the Christmas market at Toogoolawah on Saturday, 10 Dec.

Our meeting was followed by a session with Caroline Smith, Arts and Culture Manager at Somerset Regional Council to discuss the Council's first Art and Culture Strategy. Caroline pointed out how the Council in recent years has increasingly recognized the importance of arts and culture to a region such as ours. The development of the new strategy is one sign of this, as is the support for The Condensery gallery in Toogoolawah, with a full-time curator Rachel Arndt. The Arts and Culture team have held meetings to allow community members to provide feedback. Caroline showed us preliminary results of a survey that had also been undertaken. Response to the survey was pleasing as was the proportion of people in younger age groups who had responded. Respondents saw the value of Council's promotion of arts and culture. SASI members are happy to do what we can to help and look forward to the finalization of the strategy.

A highlight of the month for me was a visit to the Heritage and Arts Festival at lovely Linville in the morning on Saturday 19th Nov. I did not see any other SASI members, but there were other artists out and about. Some were taking part in the Linville Art Prize event with painting of iconic Linville scenes. One photo shows two of these artists from the Kilcoy Art Society, Susan McConnell and Ruth Hughes, with their admirable work-in-progress. Also, a very unexpected thing happened. Many years ago when I was working in Brisbane BC (before children) I took painting lessons from an artist named Eric Whisson. I used to drive out to Kallangur once a week in the evening for rewarding classes. There were sometimes some children about and one of these has grown up and is now another accomplished artist himself – Todd Whisson – also taking part in the art prize event. I was very pleased to meet Todd and asked to be remembered to his father. Todd is shown in the second photo and more of his art work can be found online.



There are no SASI meetings now until another general meeting at 10am on Friday 17 Feb, 2023. But there is our Christmas Party on Saturday, 3 Dec. I look forward to seeing you there.

A Happy Festive Season to all,
Shirley

Join SASI Groups

Click on the LOGO to visit the SASI Website



Join SASI - <https://www.sasiart.com.au/memberships>

SASI Members participate in supporting the arts and artists in SE Qld. They enjoy free exhibition curation at Glen Rock Gallery Esk, discounted or free workshops and no cost participation in SASI Members Market Stalls.

SASI Contacts : <https://www.sasiart.com.au/contact>

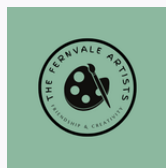
For more info Click the photo to visit SASI website Groups page



Join the Mount Beppo Artists - Contact: Gwen 0437 197 381

Meeting on Wednesday mornings from 9am until 1pm at Mount Beppo Community Hall, 916 Mount Beppo Rd, Mount Beppo QLD. New members warmly welcomed.

Click on the LOGO to visit The Fernvale Artists Facebook page



Join the Fernvale Artists - Contact Sue White 0407 072 926

The Fernvale Artists meet on Thursdays 9.30am - 12.30pm at the Fernvale Community Hall in Banks Creek Road, Fernvale, or at the Lowood Open Door Gallery. Anyone in the local area is welcome to join them, or just to visit.

For more info Click on the Camera to visit SASI Photography Group page



Join SASI Photography Group
Contact Phil Lister Email plphotographix@gmail.com

The photography group have fun learning to take better photographs. New members are very welcome. Activities, including outings workshops and talks, are advertised through the SASI newsletter.

Join Somerset Regional Council Volunteers



Join the Esk Visitor Information Centre Tourism Volunteers
Contact Carole Labram mail@somerset.qld.gov.au

Supporting the arts and regional tourism

To Apply Visit <https://thecondensery.com.au/about/get-involved/>



Become a Gallery Ambassador at The Condensery
Contact Rachael Arndt mail@somerset.qld.gov.au

Supporting the arts and regional tourism

Join a Somerset Group

<https://www.somerset.qld.gov.au/somerset-arts-culture-directory>

Somerset Arts and Culture Directory

A Somerset Regional Council Initiative supporting the arts and regional tourism



Esk Glen Rock Stitchers Lynne Robson Ph 07 5424 1382

The Glen Rock Stitchers meet every Thursday in air-conditioned comfort at the Anglican Hall, Ipswich Street, Esk. They sew and share ideas and knowledge amongst friends with this common interest.



Calendar of Events

What's on and What's coming up

Happening This Month



Glen Rock Gallery - 'Christmas Craft - Glen Rock Stitches
Friday 2nd December - Wednesday 4th January
Meet The Artist at Glen Rock Gallery
TBA



Lowood Open Door Gallery -
Saturday 2nd December
Meet the Artist at Open Door Gallery
Saturday 2nd December 1:30pm - 4:00pm
Workshop - TBA
Saturday 12th November 1:30pm - 4:00pm



The Condensery - Somerset Regional Art Gallery
Main Gallery - NATURAL STATE - CAITLIN FRANZMANN
In the Bomb Shelter - PERCEPTIONS - JASON MURPHY AND GABE PARKER
Saturday 26 Nov 2022 – Sunday 12 Feb 2023



Mt Beppo Artists Summer Break
1 December - 31st January.



The Fernvale Artists Summer Break
9 Dec 2022-18 Jan 2023.

Woodfood Library Exhibit
Sunday 2nd December - Monday 31st December
by Mary Martin



SASI Members Christmas Party
Esk Grand Hotel Lunch,
Saturday 3 December 2022 11:30am for 12 noon
RSVP Joanne Hegney



SASI Members Market Stall at
Toogoolawah Christmas Tree Community Event
Saturday 10 December Bumpin 2pm Stall open 4:30pm-8pm
Stall Coordinator: Sue Howard Contact 0499700208



Coming Up
Mt Beppo Artists Return from Summer Break
Art Group Resumes at Mt Beppo Hall Wednesday 1st Feb 2023



The Fernvale Artists Return from Summer Break
.Resuming Art Group meeting on Thursday 19 Jan 2023



Workshop Landscape Photography
TBA



Next SASI Committee and General Meeting
Somerset Civic Centre
Friday 17th February 2023 10 am



Glen Rock Gallery

supported by SASI and Somerset Regional Council

ESK VISITOR INFORMATION CENTRE 82 IPSWICH STREET, ESK, QLD 4312
TUES-FRI 9-4 WEEKENDS: 10-2 CLOSED: MONDAYS AND PUBLIC HOLIDAYS

What's Up at Glen Rock

Glen Rock Stitches

FRI 2ND DEC- WED 4TH JAN

Meet The Artist at Glen Rock Gallery

TBA

What's Coming to Glen Rock Gallery

JANUARY

Mike Donnarumma
ELECTRORUMMA

FEBRUARY

TBA

MARCH

TBA

GLEN ROCK STITCHERS

Christmas Craft



2 DECEMBER 2022 - 4TH JANUARY 2023

Christmas comes to Glen Rock Gallery in December with this eagerly awaited exhibition of beautifully crafted items, created by members of the Glen Rock Stitches.

It is a wonderful array at very reasonable prices. Come and do some Christmas shopping!



Expect to find unique treasures.

In The Display Cabinets at Glen Rock

LOCAL ARTISTS

Exquisite Cards and Gifts

Glen Rock Gallery Curators

Jan Godfrey, Sue Howard, Fred Marnock
Betty Williams, Joanne Hegney.

Note: the Gallery is closed on the first Thursday of the month for curating the new exhibition



Julie Buckworth



Shirley Gregor



Jane Harthoorn

View the full exhibition at Glen Rock Gallery, Esk Visitor Information Centre 82 Ipswich Street, Esk, QLD 4312 Tues-Fri 9-4 Weekends: 10-2

[CLICK to EXPLORE
Glen Rock Gallery online](#)



Lowood Open Door Gallery

A Lowood Lions Project

RAILWAY STREET, LOWOOD, QLD 4311
THUR 9:30AM - 12:30PM SAT/SUN 9:30AM - 2PM

What's Up at Lowood

Paul & Rebecca
2DEC-6 FEBC

Meet The Artists at Lowood

SAT 5TH NOVEMBER

In The Cabinets at Lowood

BOTTLE BOUQUETS
BY ELIZABETH BROWN



Lowood Open Door Gallery Marburg Art Group

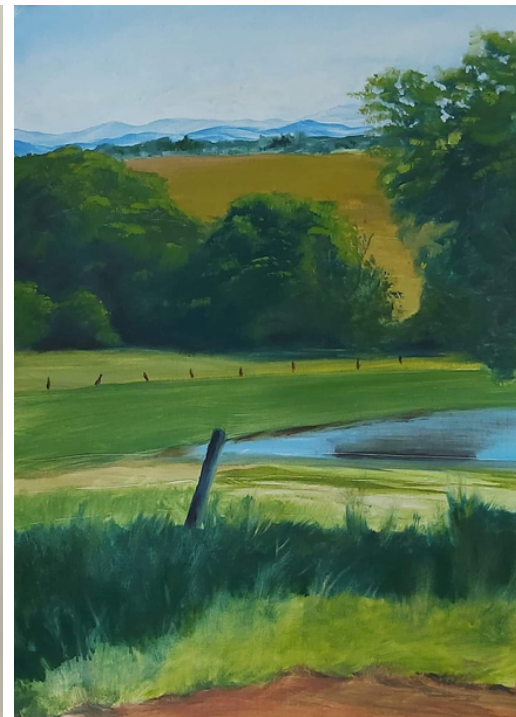
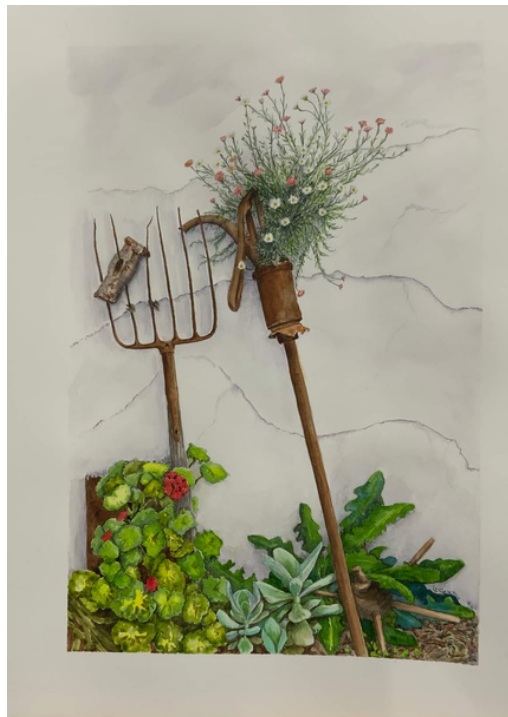
FRIDAY 2 DECEMBER - THURSDAY 6 FEBRUARY

The Lowood Open Door gallery will close for the Christmas break on Monday 19th December, reopening on Saturday 21st January.

The December and January exhibition will be the work of fifteen of the artists of Marburg Art group. Because Marburg is a beautiful little country town, and the majority of their members are country folk, this exhibition will be paintings of their area, with a theme of 'A Nod to Country'.

Marburg, bordering on Somerset, is the location each year the wonderful Black Snake Creek Festival and Art Competition, and after seeing the new exhibition at the open Door Gallery, SASI members will realise what a wonderful group this is, and no doubt be keen to visit the Black Snake Creek Festival in 2023.

Two of the paintings on show, the country view from Susan Butler and the garden fork from Linda Senjov (titles not yet available), can be seen below.





The Condensery

Somerset Regional Art Gallery

29 FACTORY ROAD TOOGOOOLAWAH QLD 4313
MON TO FRI 9AM – 5PM SAT/SUN 10AM – 4PM CLOSED PUBLIC HOLIDAYS.

What's Up at the Condensery

NATURAL STATE

26 NOV 2022 – 12 FEB 2023

Opening and Artists Talk at The Condensery

SATURDAY 26 NOVEMBER | 4PM

In The Bomb Shelter at The Condensery

PERCEPTIONS

26 NOV 2022 – 12 FEB 2023

Programs at The Condensery

THE CARBON DATING PROJECT

OCTOBER - DECEMBER 2022

Creation Station at The Condensery

EXPLORE

The Condensery Website

NATURAL STATE

CAITLIN FRANZMANN

Working closely with collaborators from different disciplines and with the particularities of sites, Caitlin Franzmann creates participatory works which take shape around slow practices, conversation, critical listening, and collective forms of care. Her new work for The Condensery will build on recent work and the specifics of the Somerset region and its unique landscape, ecological conditions and rural community.

PERCEPTIONS

JASON MURPHY AND GABE PARKER

Perceptions explores the observations and interpretations of the landscape through sight and sound by Jinibara artist Jason Murphy and sculptor Gabe Parker. Images of the Stanley River are projected against a kinetic sculpture containing reflective surfaces. As the sculpture moves the image is distorted and transformed before the viewer's eyes. A soundscape of composed ambient field recordings asks the viewer to consider their own impact and footprint on country.

THE CARBON DATING PROJECT

Carbon Dating is a hybrid arts project that seeks to shift our relationships to Australia's native grasses and grasslands, which are under severe and often unacknowledged threat.

FABULOUS FUNGI IN FOCUS

Model a mushroom at the creation station

CLICK to EXPLORE
<https://thecondensery.com.au/>

Workshops On the Drawing Board:

**Contact: SASI Photography
Workshop Coordinator**
Phil Lister
plphotographix@gmail.com

**Contact us to recommend a
Workshop with a particular
tutor and/or in a specific media**

**Contact: SASI Art Workshop
Coordinator**
Joanne Hegney
workshop@sasiart.com.au

**Artists are most welcome
to apply to present a
workshop**

On the Drawing Board

See Workshops Flier for
more info

Late April/May in Esk
Linda Maine
Colour Pencil Workshop

July/Aug Venue TBC
Julie Maddocks
Landscape
Oil or Acrylic

Photography Workshops 2023



- Landscape Photography - the how, what, where, when and why of getting great landscape images
- Managing a photo workflow on your computer, including getting photos onto your computer, software for editing, backing up your photos and more
- Bring Your Camera outings

Times and dates to be advised.

Art Workshops 2023

Intro to Classical Botanical Drawing with Cassandra Hodgins

A graphite pencil workshop -Using tone to bring your drawings to life.

Date: Saturday 11 February 2023 Time: 9am-4pm

Venue: Fernvale Community Hall, Banks Creek Road, Fernvale

Fee: SASI Members TBA Non Members TBA

Find Workshop Materials List, further info and updates at

<https://www.sasiart.com.au/workshops>





TOOGOOLAWAH CHRISTMAS TREE SASI Members Market Stall

Every year in December this lovely community event gathers the locals to the Toogoolawah main street for a celebration to welcome in Christmas with

Free Sideshow Rides
MEGA Christmas Raffle
Market Stalls
Street BBQ
Santa and Elves
Fireworks and fun!

SASI has purchased a 6x3 stall site in the Market for members. Come sell your art to people hunting for unique Christmas gifts. Your labelled artwork, with a completed Stall Inventory Form will be accepted at the stall from 2:30-3:30 pm.

[Download your Stall Inventory Form here](#)

Details

Toogoolawah Christmas Tree Market

Saturday 10 December 2022 from 4:30pm

Cressbrook St Toogoolawah

Vehicle entry via Fulham Street from 2-3pm

How it Happens

Erect Marquees and fitout 2pm -2:30pm,

Accept Artworks and Inventory Forms 2:30-3:30pm

Curate Stall 3pm-4pm (Sue and You) Remove all vehicles from street by 4pm

Stall Open for sales : 4:30 pm to 8pm Bump out 8pm



Mt Beppo Artists

Shirley and Nelle attended Phil Lister's 'About Town' exhibition opening at Glen Rock Gallery. There is something stunning about Black and White photography. Beautiful work- highly recommended. Thank you Phil.

NOVEMBER at the tables

Janine Godfrey taught Nelle how to fashion the hook for earrings. **Jo's** had her pencils out to draw a cheeky Cocky. **Daph's** landscape is developing nicely. Shirley and Janine make a cameo appearance in **Betty's** river landscape. **John** and **Sue** are painting watercolour flowers while **Joanne** is into butterflies. **Mike** is working on pieces for his exhibition at Glen Rock Gallery in January. **Shirley** is busy replacing her cards that are selling quickly from the Glen Rock display cabinets. (It's worth having a chat to Shirley or Janine about joining this inspired SASI Members sales opportunity.)

Mt Beppo Christmas/Breakup party: Wed 30 November after Art Group.

Its a little bit hot to 'art' in the hall over summer!

We're back again at Mt Beppo Hall on the first Wednesday in February.

DECEMBER:

- **TBC Wednesday 7th** at 9:30am Glen Rock Gallery to see what the Glen Rock Stitches have produced this year! - then to Angies Cafe.
- **Saturday 10:** SASI Members Stall at Toogoolawah. Most of the artists are involved in setting up and/or selling WE HOPE TO SEE YOU THERE!

JANUARY:

- **TBC Friday 6** at 9:30am we're at Glen Rock Gallery to celebrate Mike Donnarumma's ELECTRORUMMA exhibition - then on to Angies Cafe.

Wishing you all - Merry Christmas and a Happy New Year

The Fernvale Artists

No news from the Fernvale Artists, except to say that they will finish for 2022 on Thursday 15 December with lunch at Val's home, and resume in 2023 on Thursday 19 January. We wish all members of SASI a wonderful Christmas and a safe, healthy and happy new year.



Basket Weaving Workshop

The Saturday afternoon Basket Weaving for Beginners workshop with Jenny Connor held at the Lowood Open Door Gallery on 12 Nov 2022 was a really enjoyable afternoon. Basketry is one of the hardest crafts to learn so Jenny was very pleased with the end results that everyone managed to achieve.

The six participants all made small pot plant and flower baskets – with a real pot plant to display as a bonus.

Thank you to all who attended this well organised and useful workshop.



Jenny Connor’s basketry workshop was a wonderful success, with each participant creating two baskets. We hope Jenny will hold another workshop in the new year.

Workshop participant Sue White



Using your mobile phone camera to photograph your art - the good news and the bad news!

The following is from a request for suggestions for photographing art with a mobile phone. So...

Mobile phone cameras have become increasingly sophisticated in recent years and many can take simply wonderful photos. This is ideal for people wishing to record memories of trips and holidays, family events and so on.

For those who wish to take photos of their art work to advertise or for the web, it can be a quick and easy option, particularly if you do not have a "big camera".

To do this correctly though, there are a couple of things to remember which should give good results.

1. Regardless of what camera you use, including phone cameras, it is essential to make sure the camera is pointed at 90 degrees to the art work. Taking a photo of a 2D art piece at any angle other than 90 degrees *will* distort the image, e.g., the top may appear wider than the bottom with the sides not parallel. This becomes visually worse if it is framed. To avoid this, most phone cameras usually have 2 sets of cross-hairs in the centre of the screen which must line up so you can only see one cross-hair when you take the photo. This will ensure the camera is at 90 degrees to the artwork. If your camera does not have cross-hairs, use the edges of the phone screen itself as a guide to get the artwork "square" in the screen.
2. Make sure your lighting is even and as close to daylight temperature as you can get it.
 1. Uneven lighting may give a misleading result with colour saturation variable across the resulting image of the artwork.
 2. Secondly, the colour of light (colour temperature, white balance or degrees Kelvin) has an incredible impact on the colours in your artwork. For example, a normal tungsten lightbulb found in homes will give a yellow colour cast and fluorescent lights give a green colour cast. Colour corrected light bulbs can be bought at most hardware shops, BUT it is essential to choose one rated at or around 5000K or 5200K. This is the colour temperature of daylight at midday and is generally the accepted "standard" reference for viewing or working with artwork or photographs.
 3. If the artwork is covered with glass or perspex, watch out for reflections!

That's the good news, now for the bad news!

It is important to remember that colour accuracy will be variable with mobile phones. Even with the same mobile phone, for example two iPhone XR's, there will be some degree of variation between each one. If colour accuracy is very important such as using the image on a personal website to promote your work, then it might be worthwhile considering using a digital "big camera". However, if the images are going on the SASI website or a printed newsletter for example, this may not be a critical issue - it's really up to the individual.

This entire topic could be discussed much further, but for the purposes of this article and the use of images, mobile phone cameras provide a simple and very convenient way of capturing photographs of artwork for local websites and publications.

As always, if there are any questions or comments, please let me know.

Phil



Reflections on perspex affect the quality of the image - Original Artwork by Phil Lister

Keep camera lens 90 degrees to artwork and what happens when you don't - Artwork by Lynette Hughes

SASI Members Page

Dedicated to members, for members, from members.

Recommended by Members



Ipswich Art Society

Saturday Morning Casual Painting

SECOND SATURDAY of each MONTH 9.00AM TO 1.00PM

The Old Court House (Ginn street rear entrance) cnr East and Roderick Streets , Ipswich.

Come along to our Untutored Art Group held at the Old Ipswich Courthouse to enjoy some quality time and share ideas and interact with other artists.

Cost: \$5.00 for Members and \$10 for non members with 'join on arrival' facility.
Coffee/tea is provided , bring your lunch.



If you're setting up to photograph something and need flowers to fill in space, or to be a focal point, consider giving Flowers by Felicity a call and discuss your requirements. Located just out of Esk on the Hampton Road.



Flowers by Felicity

Qualified Florist 25+ Years

Plants, Flowers & Arrangements
for all occasions



Felicity Maden,
emervale4@activ8.net.au
0413 133 168
#FlowerPower

Riot Art and Craft Stores are now stocking quality artist supplies

<https://riotstores.com.au>

A selection of
Mont Marte Artist Supplies
are available at
Toogoolawah
Home Timber and Hardware

Contact Donna Phone: 5423 1222

Cressbrook News and Stationery

Contact Mark or Pauline Phone: 54231396



creativebug

STREAM ART & CRAFT
CLASSES FOR FREE AT
YOUR LOCAL LIBRARY

LEARN HOW

SASI appreciates the support of Esk Fruit Shop and Angie's Country Cafe, who display SASI brochures and our Glen Rock Gallery posters.



'CHRISTMAS CRAFT'

Esk Glen Rock Stitchers

Fri 2 Dec 2022 to Wed 4 Jan 2023

Esk Visitor Information Centre

82 Ipswich St Esk QLD

Tues to Fri: 9am-4pm Sat&Sun 9am -2pm

Closed: Mon & Public Holidays



'ELECTRORUMMA'

Fri 6 Jan 2023 to Wed 1 Feb 2023

Mike Donnarumma

Meet The Artist: Fri 6 Jan 9:30 - 10:30am

Esk Visitor Information Centre

82 Ipswich St Esk QLD

Tues to Fri: 9am-4pm Sat&Sun 9am -2pm

Closed: Mon & Public Holidays



**Proposed
Workshops for
2023**

**They will be great
fun and build your
art skills.**

**Expressions of
interest**

**As numbers will
be limited**

**More details will
be able on the
webpage and the
next Newsletter**

WORKSHOPS 2023

Fernvale Community Hall: 11th February 2023

Artist: Cassandra Hodgins
Botanical graphite workshop.
9.00- 4.00pm. (BYO 1hr lunch)

St Agnes Church Hall, Esk: Date TBC: after Easter/May.

Artist: Linda Maine
Coloured pencil workshop.
9.00 – 4.00pm (BYO 1hr lunch)

Venue : TBC – either Fernvale or Esk: July/August.

Artist: Julie Maddocks
Landscape workshop. Attendees may use either oils or acrylic.
9.30- 3.30pm (BYO 1hr lunch)

Morning and Afternoon tea will be provided by SASi.

Please advise expressions of interest to:

Joanne Hegney

Workshop Coordinator

workshop@sasiart.com

ARTIST OF THE MONTH

MARY MARTIN



Woodford Library

Mon - Thurs: 08:30 AM-05:00 PM

Friday 08:30 AM-07:00 PM

Saturday 09:00 AM-01:00 PM

Nature Photography
2nd Dec - End of Dec

1 Elizabeth Street, Woodford 4514