



# Somerset Art Society Inc

Supporting the arts and artists in the Somerset Region SE Qld

## Newsletter May 2023

### This issue:

#### Presidents Report

PAGE 01

#### Join a Group

##### Info and Links

PAGE 02

#### Calendar

PAGE 03

#### Glen Rock Gallery

PAGE 04

#### Lowood Open Door Gallery

PAGE 05

#### The Condensery

Somerset Regional Art Gallery

PAGE 06

#### SASI Workshops

PAGE 07

#### Group Chat

Group Photos and reports

PAGE 08

#### Photography Article

PAGE 09

#### Members Page

PAGE 10

### President's Ponderings

from Shirley Gregor

Hello Everyone,

May is upon us now along with some cooler weather. The remaining autumn and winter months will have a number of art happenings in Somerset. We have opportunities for artists to exhibit their work at the Hampton Festival and the Esk Show and then the marvellous Esk Garden and Lifestyle Fair on 17 June. Other events include the opening of the new exhibition Things I Want to Say at 4pm on 6 May at The Condensery.

A team of enthusiastic people are also planning activities for the Somerset Celebrates Art happenings that will run all through July. Personally I thoroughly enjoyed what went on last year and there are extra things happening this year. An outline of dates is on page 3.

At the beginning of April I visited the Lowood Open Door Gallery and saw the new exhibition by three local artists, Colleen Butler, Dale Lee and Tracy Bartlett. Very impressive work by all.

While at the Open Door Gallery I talked to artist Jack Lait and saw some of the stunning work he does in watercolour pencil. An example is the two Crested Pigeons ("toppies") shown in the photo, with the exhibition in the background. Jack told me he comes into the gallery most weekends to do some of his work and talk to visitors, which he very much enjoys. Jack has a passionate interest in birds, wildlife and natural history. He has already had success in selling some of his work at the exhibition of students' work at the gallery last year, which is not surprising. It is great to see such talent and interest in art in someone just starting out.

Also last month was the "meet the artists" event for the new "Two Years My Home" exhibition by Robyn and Tony Sticovich at the Glen Rock Gallery, Esk. This exhibition was very striking, with Robyn's work reflecting her experiences of the issues she and others have faced over the last two years and complemented by the very skilled and imaginative wood sculptures created by Tony. There was a good turnout, with around eighteen people. The photo shows, left to right, Jan Godfrey the gallery co-ordinator, Robyn Garland-Sticovich the exhibitor, Nelle Smith SASI Treasurer and Betty Williams, exhibit curator.

Reflecting on the above activities again shows how fortunate we are in the Somerset region to have so much going on in the art space and a number of different venues where a wide range of different types of work can be exhibited.

Note the next SASI general meeting is on 19 May, 9:45 am for morning tea and 10 am for meeting start, at St Agnes Hall, Esk. All SASI members are welcome.

All the best  
Shirley



## Join SASI Groups

Click on the LOGO to visit the SASI Website



Join SASI - <https://www.sasiart.com.au/memberships>

SASI Members participate in supporting the arts and artists in SE Qld. They enjoy free exhibition curation at Glen Rock Gallery Esk, discounted or free workshops and no cost participation in SASI Members Market Stalls.

SASI Contacts : <https://www.sasiart.com.au/contact>

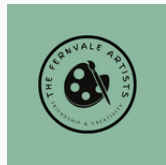
For more info Click the photo to visit SASI website Groups page



Join the Mount Beppo Artists - Contact: Gwen 0437 197 381

Meeting on Wednesday mornings from 9am until 1pm at Mount Beppo Community Hall, 916 Mount Beppo Rd, Mount Beppo QLD. New members warmly welcomed.

Click on the LOGO to visit The Fernvale Artists Facebook page



Join the Fernvale Artists - Contact Sue White 0407 072 926

The Fernvale Artists meet on Thursdays 9.30am - 12.30pm at the Fernvale Community Hall in Banks Creek Road, Fernvale, or at the Lowood Open Door Gallery. Anyone in the local area is welcome to join them, or just to visit.

For more info Click on the Camera to visit SASI Photography Group page



Join SASI Photography Group  
Contact Phil Lister Email [plphotographix@gmail.com](mailto:plphotographix@gmail.com)

The photography group have fun learning to take better photographs. New members are very welcome. Activities, including outings workshops and talks, are advertised through the SASI newsletter.

## Join Somerset Regional Council Volunteers



Join the Esk Visitor Information Centre Tourism Volunteers  
Contact Carole Labram [mail@somerset.qld.gov.au](mailto:mail@somerset.qld.gov.au)

To Apply visit [Volunteer | Experience Somerset](#)

To Apply Visit <https://thecondensery.com.au/about/get-involved/>



Become a Gallery Ambassador at The Condensery  
Contact Rachael Arndt [mail@somerset.qld.gov.au](mailto:mail@somerset.qld.gov.au)

Supporting the arts and regional tourism

## Join a Somerset Group

<https://www.somerset.qld.gov.au/somerset-arts-culture-directory>

Somerset Arts and Culture Directory

A Somerset Regional Council Initiative supporting the arts and regional tourism



Esk Glen Rock Stitchers Lynne Robson Ph 07 5424 1382

The Glen Rock Stitchers meet every Thursday in air-conditioned comfort at the Anglican Hall, Ipswich Street, Esk. They sew and share ideas and knowledge amongst friends with this common interest.



# Calendar of Events

What's on and What's coming up

## Happening This Month

### **Glen Rock Gallery**

5th May to 31st May  
Glimpses by Michelle Ledwith

### **SASI General Meeting**

10am 19th May @ St Agnes Hall 85 Ipswich St, Esk

### **Hampton Festival**

21st May

### **Esk Show Visual Arts Competition**

Drop Off Entries: 10am - 1pm, 24th May  
Esk Show Day: 26th & 27th May  
Entry Collection: 4:30pm - 5pm, 27th May

## Coming Up

### **Glen Rock Gallery - Meet the Artist**

9:30am, 2nd June  
Come and meet Betty Williams!

### **Colour Pencil Workshop with Linda Maine**

3rd June, Esk; Workshop Fee: \$45  
9am for a 9:30am start, finishes 3:30pm

### **Ipswich Lockyer Greens - World Environment Day**

3-4 June

### **SASI Committee Meeting**

9:45am for 10am, 16th June

### **SASI Stall at Esk Garden and Lifestyle Fair**

Saturday 17th June 8am-3pm  
SASI is set to have two stalls, Co-ordinator Sue Howard

### **Get Ready for Full Weekends of Art in July in a Somerset town near you!**

Somerset Celebrates Art in Lowood 1st and 2nd  
Somerset Celebrates Art in Fernvale 8th & 9th  
Somerset Celebrates Art in Esk 15th & 16th  
Somerset Celebrates Art in Toogoolawah, Coal Creek, Mt Beppo 22nd & 23rd  
Somerset Celebrates Art in Kilcoy, Linville 29th & 30th



# Glen Rock Gallery

supported by SASI and Somerset Regional Council

ESK VISITOR INFORMATION CENTRE 82 IPSWICH STREET, ESK, QLD 4312  
TUES-FRI 9-4 WEEKENDS: 10-2 CLOSED: MONDAYS AND PUBLIC HOLIDAYS

## What's Up at Glen Rock

Michelle Ledwith

FRI 5TH MAY - WED 31ST MAY

## Meet The Artist at Glen Rock Gallery

FRIDAY 5TH MAY 9:30AM

## What's Coming to Glen Rock Gallery

JUNE

Betty Williams

JULY

Deb Dawkings & Coal Creek Pottery

AUGUST

Deb Johnstone-Booker

## In The Display Cabinets at Glen Rock

LOCAL ARTISTS

Exquisite Cards and Gifts

### Glen Rock Gallery Curators

Jan Godfrey, Sue Howard, Betty Williams.

Note: the Gallery is closed on the first Thursday of the month for curating the new exhibition

## Glimpses by Michelle Ledwith

5TH MAY 2023 - 31ST MAY 2023

As an emerging artist my artistic practice at present is exploratory of many different mediums and subjects. I have always loved art and have dabbled away at every opportunity.

Having no formal art training, I am on a learning curve regarding use of materials and techniques, and in some ways I feel I am free to experiment in all sorts of ways.

My inspiration is mostly drawn from nature and my own observations. I love to observe the colours, light and shadow, patterns and moods of nature.

All aspects of nature are attractive to me, from the micro in the fungi world to open skies with huge, towering cloud formations. In conjunction with this I am beginning to express messages about the damage being done to our natural world, and I expect to continue with this theme.

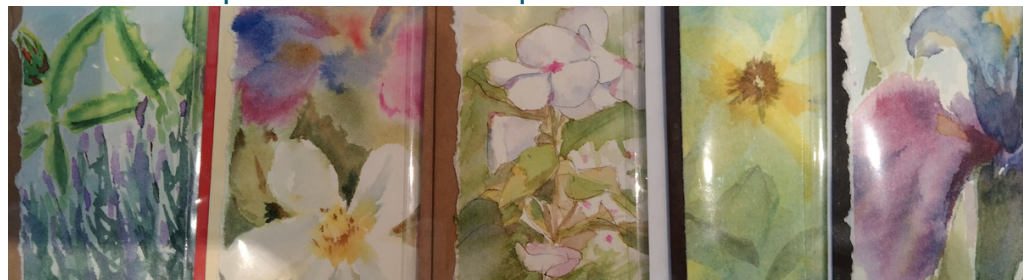
Whilst driving over 4.5000 km on a recent road trip to N.S.W. and northern Victoria, I was struck by how the glimpses one sees while travelling are so like a painting of scenes captured as a still photo in one's memory.

This gave us the idea of "Glimpses" for the title of our Exhibition.

Other glimpses are from a window or a resting spot, or from everyday scenes. We hope you enjoy our paintings as much as we enjoyed creating them.



Expect to find unique treasures.



Beautiful Cards - original artworks by SASI members!

View the full exhibition at Glen Rock Gallery, Esk Visitor Information Centre 82 Ipswich Street, Esk, QLD 4312 Tues-Fri 9-4 Weekends: 10-2

[CLICK to EXPLORE  
Glen Rock Gallery online](#)





# Lowood Open Door Gallery

## A Lowood Lions Project

RAILWAY STREET, LOWOOD, QLD 4311  
 THUR 9:30AM - 12:30PM SAT/SUN 9:30AM - 2PM

### What's Up at Lowood

Fun Fur & Fantasy  
5TH MAY

### In The Cabinets at Lowood

NEW DISPLAYS EACH MONTH

## Lowood Open Door Gallery

### EXHIBITIONS



The April exhibition by Colleen Butler, Dale Lee and Tracy Bartlett was a wonderful success, each artist being self-taught, individual and very creative.



### Feathers Fur and Fantasy

A collection of work by multi award winning artists  
 Karen Leahy & Caroline Bradley  
 From May 5 till June 1  
 Opening night May 6th at 3pm- Meet the artists  
 Afternoon tea provided  
 Open Door Gallery- 45 Railway Street, Lowood,  
 QLD, Australia, 4311



The May exhibition, Feathers Fur and Fantasy, the work of Fernvale artist Karen Leahy and Caroline Bradley, will open on Saturday 6<sup>th</sup> May

**WORKSHOPS** Cassandra Hodgins' three Botanical Illustration – Drawing in graphite workshops were excellent, with very comprehensive printed botanical information and clear and patient guidance for the artists' drawing of the specimens provided.



On Saturday 13 May Karen Leahy will present a Flow Art workshop using fluid acrylic medium.



And lastly, members of SASI are invited to paint a pink picture and donate it to our auction in October as a fundraiser for Breast Cancer Nurses.



# The Condensery

## Somerset Regional Art Gallery

29 FACTORY ROAD TOOGOOLOWAH QLD 4313  
WED TO SUN 10AM - 4PM CLOSED PUBLIC HOLIDAYS.

### What's Up at the Condensery

#### THINGS I WANT TO SAY

6TH MAY - 16 JUL 2023

#### THINGS I WANT TO SAY

**JORDAN AZCUNE | TYZA HART | DYLAN MOONEY | LUCE  
NGUYỄN-HUNT | GUTINARRA YUNUPINGU | JUSTINE YOUSSEF**  
**6 MAY - 16 JUL 2023**

Things I want to say brings together artists from across the country whose practices negotiate identity in contemporary Australia. Focusing on artists with a connection to Queensland, the exhibition will encourage conversation around navigating one's sense of self within the pressures of broader society.

#### THINGS I WANT TO SAY | PERFORMANCE & VIDEO

**Saturday 13 May | 11am - 3pm**

Join artist Zenus Moonbeam for a performance and video making workshop that celebrates you as you are! Whether you're interested in performing in front of the camera or becoming a budding film maker, this workshop will give you insight into the world of video and performance. We will play with story-lines, movement, abstract and experimentation. Join in to collectively create a video to be played live at an event in July!

#### FREE PIZZA LUNCH

Suitable for ages 12+. All materials supplied. Bookings essential for catering purposes.

### Creation Station at The Condensery

#### EXPLORE The Condensery Website

CLICK to EXPLORE  
<https://thecondensery.com.au/>

**Contact: SASI Photography  
Workshop Coordinator**  
Phil Lister  
plphotographix@gmail.com

**Contact us to recommend a  
Workshop with a particular  
tutor and/or in a specific media**

**Contact: SASI Art Workshop  
Coordinator**  
Joanne Hegney  
workshop@sasiart.com.au

**Artists are most welcome  
to apply to present a  
workshop**

## Art Workshops 2023

### Colour Pencils Workshop

Artist: Linda Maine

Date: 3rd June

Fee: \$45

Location: St Agnes Church Hall Esk

Time: 9:30 - 3:30

Morning & Afternoon teas provided BYO lunch.

**Registrations NOW OPEN!**

Register Here:

<https://www.sasiart.com.au/workshops>

This workshop has options for participants:

A Kookaburra, which is a more challenging project and will require more time.

The Dragonfly, Frog and Shells are less challenging, each will have their own inspiring demands.



### Landscaping with a limited palette

Artist: Julie Maddocks

Date: 19th August

Location: St Agnes Church Hall Esk

Time: 9:30 - 3:30

Morning & Afternoon teas provided BYO lunch.

Registrations open 15th June 2023



## Mt Beppo Artists

Mt Beppo Artists enjoyed attending beautifully presented works of Robyn and Tony Stickovich in April. Congratulations to the artists and curators. Mt Beppo Artists will meet again at Glen Rock Gallery on Friday 5th May 2023 at 9:30am. We will view the newly hung exhibition followed by morning tea at Angie's Cafe. We hope to see you there!

The Artists have been conscientiously planning their contribution to Somerset Celebrates Art in July 2023. We will be opening the doors to Mt Beppo Hall at 10am on Sunday 16th of July. You are Invited to relax and Make Art with us at our 'quick as you like' mini workshops. More info next month. So exciting!

## The Fernvale Artists

On Easter Saturday several members had a wonderful day visiting Kerry and Mike Hetherington's Twisted Tin Studio for a day's painting and companionship. Our thanks to Kerry and Mike, and we hope to have more painting days at your lovely property in the future.

Three members visited the exhibition of the extraordinary early colonial ornithological paintings of the Scott sisters at the Redcliffe Museum. Coupled with their work was that of Queensland artist Lesley Kendall, who creates insects, life sized and life like, from paper. Both exhibitions will be at the museum until 18 June, and are very well worth a visit.

## Landscape Photography Workshop Report

Fresh from a photography trip to the Flinders Ranges, Phil Lister welcomed five SASI members excited to learn his landscape photography tips. Phil is a generous and informative tutor.

Thank you Phil.





**To B&W or not to B&W, that is the question!**

Well, yes, it is a question, but the point of this is why choose to make an image Black and White (B&W) in the first place and not colour. David Allen Harvey once said “Don't shoot what it looks like, shoot what it feels like”. It's all about subjective expression.

Although many photographers use colour in street photography for instance, the founders of the photographic institution Magnum in 1947 used B&W as a means to provide impact and some of the most iconic images of the 20th century came from this group. Although in the post-WW2 era B&W was easier and quicker to process and develop it nonetheless provided a unique perspective on world events.

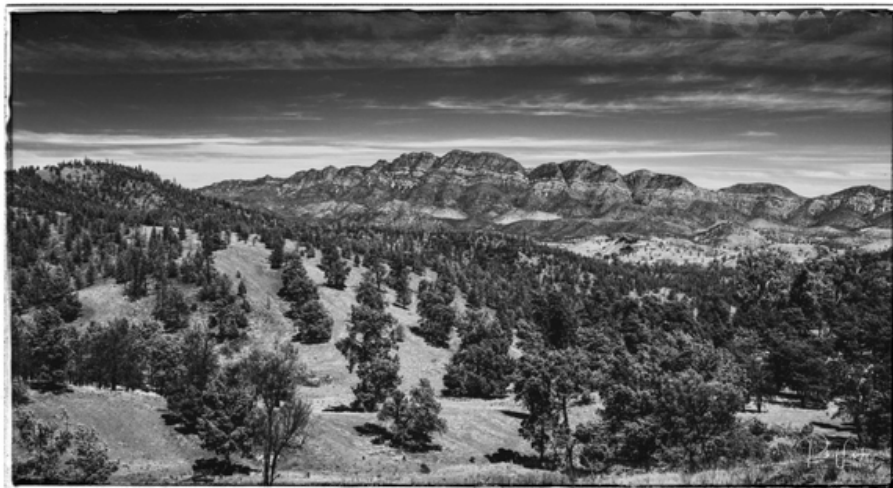
Over the years I have always used B&W in my street photography (and a lot of portraits) and to me, personally, it creates images not only without the distraction of colour, but in some cases reflects the reality of life of some of the people and situations I photograph. But before the ethically minded crowd get into gear about photographing the poor and down and out, note that photography is a very powerful tool to bring awareness to the wider community about issues that exist all around us. Take a look at the group Photographers without Borders for instance.

What about landscapes? Landscapes in B&W can simply be amazing! But you should think though the process beforehand to determine which option would provide a better representation of the scene in front of you. And this is an entirely subjective and personal decision. Many of you may have seen my reference to the American landscape photographer Ansel Adams who produced many incredible images of Yosemite Valley. All monochrome. Do yourself a favour and look at some of his work. I know of a few people that shoot in colour only and then if the colour image doesn't “look right” they change it to B&W. Which is fine, but sometimes it may have been better to take the image in B&W in the first place. There are technical issues relating to editing with this approach, but this is probably left to another time. In my camera there is a setting which allows me to shoot in B&W and on the recent Flinders Ranges trip, I used one camera for B&W and the other for colour. Maybe your camera has a setting buried in the menu system that allows you to do the same. If so, give it a try, you may be surprised at the results! I certainly was when I discovered this option, it gave me a whole new perspective.

On the other hand, there are some scenes that definitely should be in colour - morning light, autumn leaves, flowers, sunsets and so on. But to create images with impact, nuances of light and shade, texture and, sometimes, that timeless old world charm you really should give black and white a try.... but please, just don't sepia tone everything!

Until next time

Phil



# SASI Members Page

Dedicated to members, for members, from members.

## Recommended by Members



## Ipswich Art Society

**Saturday Morning Casual Painting**  
SECOND SATURDAY of each MONTH 9.00AM TO 1.00PM

The Old Court House (Ginn street rear entrance) cnr  
East and Roderick Streets , Ipswich.

Come along to our Untutored Art Group held at the Old  
Ipswich Courthouse to enjoy some quality time and  
share ideas and interact with other artists.

Cost: \$5.00 for Members and \$10 for non members  
with 'join on arrival' facility.  
Coffee/tea is provided , bring your lunch.



If you're setting up to photograph something  
and need flowers to fill in space, or to be a  
focal point, consider giving Flowers by  
Felicity a call and discuss your requirements.  
Located just out of Esk on the Hampton Road.



Felicity Maden,

✉ emervale4@activ8.net.au

☎ 0413 133 168

📷 #FlowerPower

**Riot Art and Craft Stores**  
are now stocking  
quality artist supplies  
<https://riotstores.com.au>

A selection of  
**Mont Marte Artist Supplies**  
are available at  
**Toogoolawah**  
**Home Timber and Hardware**

Contact Donna Phone: 5423 1222

**Cressbrook News and Stationery**

Contact Mark or Pauline Phone: 54231396



**creativebug**

**STREAM ART & CRAFT  
CLASSES FOR FREE AT  
YOUR LOCAL LIBRARY**

**LEARN HOW**

SASI appreciates the support of Esk Fruit Shop and Angie's Country Cafe, who display  
SASI brochures and our Glen Rock Gallery posters.