



# Somerset Art Society Inc

Supporting the arts and artists in the Somerset Region SE Qld



## Newsletter October 2022

### This issue:

#### Presidents Report

PAGE 01

#### Calendar

PAGE 02

#### Artists Group

#### Info and Happenings

PAGE 03

#### Glen Rock Gallery

PAGE 04

#### SASI Workshop & Events

PAGE 05

#### Teddy Bears Picnic

PAGE 06-07

#### Photography Article

#### Lifeguard Hut

PAGE 08

#### Crows Nest Exhibition

PAGE 9

#### The Condensery Somerset Regional Art Gallery SASI Contacts

PAGE 10

#### Members Page

PAGE 11

#### Glenrock Gallery Flyers

PAGE 12-13

### President's Ponderings

Hello Everyone,

September and October continue to be busy months, with a number of events, as can be seen in the following pages of the newsletter.

The first meeting of the new SASI management committee took place on Friday 23 September, ably chaired by our Vice-President Jenny Connor. We have a larger committee now with some extra members, which is good as more new ideas get contributed. Something different is that we have included a regular agenda item for Media and Promotion. We can coordinate what is done and let our separate groups and venues promote their own activities effectively themselves, with assistance from SASI overall as needed.

During September I was in Rockhampton and visited the new Rockhampton Museum of Art, opened only this year and constructed with the support of funds from all levels of government in Australia. The building has been purpose-built and has a lovely design with a nice open feel, with a great situation by the Fitzroy River. The gallery is fortunate in having a collection built up over years that includes significant Australian artists such as Sidney Nolan, Judy Cassab, Arthur Boyd, Russell Drysdale, Fred Williams and Charles Blackman. It displays more contemporary work along with these masters. I could also recognize people on its Board whom I knew from when I lived in Rockhampton. The gallery is well worth a visit if you are up that way (<https://www.rmoa.com.au/Home>).

This experience led me to thinking more about how we are fortunate to have the very special Condensery gallery in Toogoolawah, which also has a lovely feel of light and space and possibly a unique position in being set on some sides amongst park-like farmland. People who are new to Somerset may not realize what we have, or its history. The conversion of an abandoned factory into a regional gallery began only in 2014 and it has received a number of architectural awards. A key player was longstanding SASI member and former MP Beryce Nelson. Beryce had travelled to Canberra to enlist support and government funding and Council followed this up with community meetings before deciding to proceed with the project for a regional art gallery and sculpture park. Since May 2021 the gallery has had Rachel Arndt as a curator, allowing the gallery take on a national presence.

Again, this initiative shows how community working with local government can achieve valuable outcomes for a region and its visitors. The current advisory board includes SASI members Jan Godfrey, a former SASI president. This brief note does not do the gallery justice, so a visit is recommended if you have not already been there (<https://thecondensery.com.au/>).

All the best, Shirley Gregor

Photo: Western wall of The Condensery, courtesy of Nelle Smith



# CALENDAR OF EVENTS: What's on and What's coming up



## Happening This Month

**The Condensery - Within Walking Distance**  
Saturday 10th September - Thursday 20th November  
by Hayley Megan French

**The Condensery - Brave Girl: The Warrior**  
Saturday 10th September - Thursday 20th November  
by Karike Ashworth

**Lowood Open Door Gallery - 'Tiny Works'**  
Saturday 1st October - Monday 31st October  
45 Railway Street, Lowood  
'by Artists of Crows Nest

**Glen Rock Gallery - 'The wonderfully Wild Two Sues'**  
Friday 7th October - Wednesday 2nd November  
by Susan Wellingham and Sue Howard

**SASI Stall at Marburg Garden & Outdoor Expo**  
Saturday 8th October  
Contact: Linda Maine

**Glen Rock Gallery - Meet The Artists**  
Saturday 15th October 10 AM

**Morning Tea at Lowood Open Door Gallery**  
Saturday 29th October  
RSVP before 24th October by contacting [Yvonne.Hawkins@bigpond.com](mailto:Yvonne.Hawkins@bigpond.com)

## Lowood Open Door Gallery Workshops

**A Plant Dyed Paper Workshop**  
Sunday 9th October  
Bookings & Enquiries: Cassandra Hodgins 0400 884 388

**Making Minatures Workshop**  
Sunday 16th October  
Bookings & Enquiries: Karen Leahey 0402 217 912

**Resin Workshop**  
Saturday 29th October  
Bookings & Enquiries: Karen Leahey 0402 217 912

## Coming Up

**SASI Stall at Toogoolawah Christmas Tree**  
Saturday 10th December  
Details to be announced.

INTERESTED IN JOINING SASI?  
NEW AND CONTINUEING MEMBERS:  
PLEASE COMPLETE THE [JOIN SASI](#)  
FORM ON THE WEBSITE

[Join SASI](#)

COST: \$20

[Link to membership page](#)

# ARTISTS GROUPS INFO & CALENDAR EVENTS

## Fernvale Happenings

The Fernvale Artists have a new Facebook page, identifiable by the new logo to the right.

Several members enjoyed a day painting outdoors in Val Wright's wonderful garden, a practice day for our coming visit to Lions Camp Duckadang. Foreground of Val's colourful garden beds, background of the green Lowood hills.

Sadly, earlier in the month we lost our dear member Sylvia Allen, who passed away peacefully with her beloved family at her bedside. Sylvia's beautiful pencil work and her brilliant photos have been an inspiration to us all, and she will be sadly missed by all who knew and loved her. And a second member, Ruth Cairns, is leaving Somerset to live with her daughter in Brisbane. We wish Ruth every happiness, and hope she will continue creating her beautifully detailed works of art.



## Fernvale Artists Group Info

The Fernvale Artists meet on Thursday mornings from 9.30am until 12.30pm at the Fernvale Community Hall in Banks Creek Road, Fernvale, or at the Lowood Open Door Gallery, to paint and to share their love of art.

All are members of SASI. Anyone in the local area is absolutely welcome to join them, or just to visit.

Contact: Sue White on 0407 072 926.

## Mount Beppo Artists Group Info

The Mount Beppo Artists meet on Wednesday mornings from 9am until 1pm at Mount Beppo Community Hall,

Address: 916 Mount Beppo Rd, Mount Beppo QLD.

The artists use a range of mediums and share their knowledge and skills in a supportive environment. New members warmly welcomed. Contact: Gwen 0437 197 381

## SASI Photography Group Info

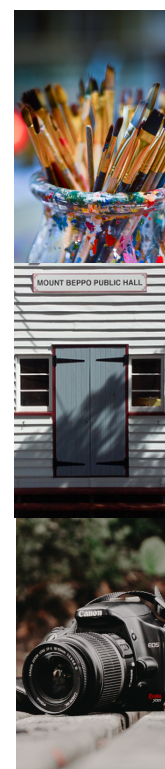
The photography group have a fun time learning to take better photographs. New members are very welcome. Activities, including outings and talks, are advertised through the SASI newsletter. Due to Covid issues and travel plans by Phil, Photo workshops will be on hold until July.

Workshops planned for the latter half of the year include:

1. Managing a photo workflow on your computer, including getting photos onto your computer, software for editing, backing up your photos and more
2. Landscape Photography - the how, what, where, when and why of getting great landscape images and
3. A couple of outings if we have enough interest.

As always, if anyone has a request for a particular topic, please email me and let me know.

For further information please see the SASI Photography Group page <https://www.sasiart.com.au/sasi-photography-group> or email Phil Lister [plphotographix@gmail.com](mailto:plphotographix@gmail.com)



# Glen Rock Gallery- Up and Coming

ESK VISITOR INFORMATION CENTRE 82 IPSWICH STREET, ESK, QLD 4312  
TUES-FRI 9-4 WEEKENDS: 10-2 CLOSED: MONDAYS AND PUBLIC HOLIDAYS

## What's Up at Glen Rock

### The Two Sues

FRI 7TH OCT - WED 2ND NOV

### Meet The Artists at Glen Rock Gallery

10AM SAT 15TH OCT

## Coming Up at Glen Rock Gallery

### NOVEMBER

Photography Exhibition  
by Phil Lister

### DECEMBER

Christmas Crafts  
by Glen Rock Stickers

### Curator Teams

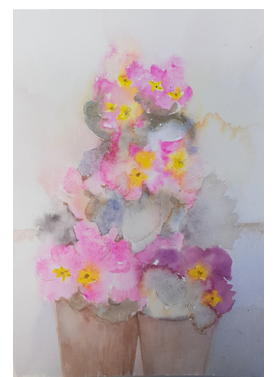
Jan Godfrey & Sue Howard  
Ron Orr & Sue White

Note: the Gallery is closed on Artwork  
Delivery and Collection days

## The Wonderfully Wild Two Sues Susan Wellingham & Sue Howard

7TH OCTOBER - 2ND NOVEMBER

The two Sues enjoy the challenges of watercolour painting and the "wildness" of "wet on wet" technique as opposed to a Botanical style. It is the "impression" of nature that they endeavour to capture.



View the full exhibition at Glen Rock Gallery, Esk Visitor Information Centre 82 Ipswich Street, Esk, QLD 4312 Tues-Fri 9-4 Weekends: 10-2

Can't make it to the gallery?

To view a small selection of the exhibited works visit the Glen Rock Gallery website page <https://www.sasiart.com.au/glen-rock-gallery>.

# SASI Workshops & Events

## Youth Storytelling Through Movement by Ze Sherpa

### Workshops On the Drawing Board:

Contact:  
SASI Workshop  
Coordinator  
workshop@sasiart.com.au

Contact SASI to  
recommend a  
Workshop with a  
particular tutor  
and/or in a specific  
media

Artists are most  
welcome to apply  
to present a  
workshop

10 September 2022 Alexandra Hall Toogoolawah  
With the generous assistance of an Australia Post Community Grant, Ze ran a free 2 hour workshop for youth at Alexandra Hall Toogoolawah.

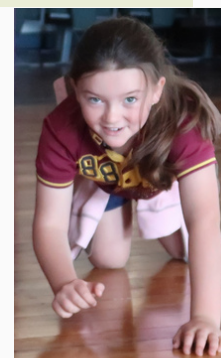
The Storytelling Through Movement workshop focused on forming a character using movement and taking the character through a variety of scenarios and emotions.

Each participant was invited to mime a variety of animals for the group. The participants' used chosen animals to portray their interpretation of that animal's movement. We were surprised at how few movements it took for us to guess the animal.

With each participant choosing an animal character the group moved into scenarios. This part of the workshop was fast and fun, with the sloth joining the merriment when it was granted the magic power to speed up.

Following a well deserved and delicious morning tea, the final section of the workshop involved costuming and facepaint makeup. A Fashion Show scenario was used as the vehicle for participants to display their animal character.

All participants were impressed with the quality of this workshop. Ze is an excellent workshop convener.



## Lowood Open Door Gallery

The October exhibition at the Lowood Open Door Gallery features an exhibition of more than sixty "Tiny Works" by Artists of Crows Nest. It is based on fifteen artists taking on the challenge to produce a series of small works 20 x 20 cm.

They have used a wide range of mediums including oils, acrylics, mixed media, mosaics etc. This dared the artists to focus their ideas by narrowing down the size and scope of work. The artists chose subjects of interest to them, many scenes and objects relating to our local rural lifestyle and environment.

The exhibition is on show until the end of October and all art is for sale.



Workshops at Lowood Open Door Gallery in October will include a Making Miniatures workshop, Sunday 16th October, and a Resin workshop on Saturday 29th October, both by Karen Leahy. For enquiries and bookings please phone or text Karen on 0402 217 912.

A Plant Dyed Paper workshop on Sunday 9th October will be presented by Cassandra Hodgins. For enquiries or bookings please phone or text Cassandra on 0400 884 388.

# Teddy Bear Picnic

The Teddy Bears Picnic in Esk was held on Thursday 29 September and was well attended by community groups providing stalls with child friendly activities. With Somerset Regional Council providing the venue and a delicious sausage sizzle attendees gained knowledge, practiced new skills and left with a full tummy.

Mt Beppo Artists Ze Sherpa, Gwen Litfin and Nelle Smith provided a stall that included Dress Ups, Colouring in, a Playdough Community Artwork table and Bling Your Bear Jewellery Making.

Gwen printed out a heap of different bears for the kids to colour. Gwen also made Playdough in as many colours as she had pots in her kitchen. Gwen has LOTS of pots. We had a big frame (aka an old bit of wood bench with an area cut out for a sink) with a black corflute backing for the 'Playdough Community Artwork'

Ze, our former SASI President, had been to the last Teddy Bears Picnic in Fernvale and thought dress ups for Bears would be a fun addition. The Toogoolawah Red Cross happened to be having a sale on baby clothes - 5 pieces for \$1. Excellent! They also gave us a discount as the pieces were for a Free community event. Unused dress ups were returned to the Red Cross.

Susan Wellingham, (Mt Beppo Artist) on hearing about Bling Your Bear, donated all her excess beads and bead making wire and crimps. With a useful tutorial from Susan, and a hunt through my tools for needle nose pliers, Ze and I passed this skill to around 20 kids (of all ages). It's a lot of fun creating.

I'm sure I'll put my hand up to do Teddy Bears again.

Many thanks to Gwen, Ze, Nelle Susan and the Red Cross for making this such a successful Stall.





## Photo Stories No. 1

### Lifeguard Hut Sunset



This photo was taken near Palm Beach Parklands on the Gold Coast and shows the lifeguard hut at Currumbin Point.

My friend and I travelled to this location to specifically photograph the large rock formations that are not seen here, but are located to the left of this image at the end of the rock wall. After I set up my camera and tripod on the rock wall opposite, I quickly realised that the specific reason for travelling this far wasn't going to produce the images I had hoped for.

I usually use Google Earth to find likely locations and after looking at this spot, plus Googling images of the same to see what others had done, I thought this would be a worthwhile location. Sometimes however things just don't work out as I had imagined and this was one of those times. From our location, the rock formations were flat lighting-wise, uninteresting, were crawling with people and just didn't inspire me at all.

So I started to look for something else to photograph and then I realised that the lifeguard hut was actually beginning to "come alive" with the setting sun lighting the scene. It was taken just before the sun set behind the tall buildings at Surfers Paradise, enhanced by a slight smoke haze from a distant bushfire. The only issue I had was the kite surfers in the channel just in front of me, but I knew their constant movement would not be recorded on a long exposure.

And this is the final image. There was surprisingly little editing done to the raw image, some contrast changes and removal of some small blemishes were all that was needed. I have printed and mat boarded this image to fit a 16" x 20" frame.

Let me know if you have a story behind a photo you have taken.

As always, questions and comments are welcomed.

Until next month, happy photographing.

Phil



# Artists of Crows Nest Exhibition Opening by Betty Williams

Bill Morton, patron of the Artists of Crows Nest ,opened their Glen Rock Gallery exhibition on Saturday 10 Sept 2022 with a motivational talk on what art is and what art can communicate.

A group of Mt Beppo Artists attended and enjoyed the variety of styles of the major work of each artist. A video slideshow of the artists' works complemented the exhibition.

The Artists of Crows Nest had each compiled one of 20 beautifully decorated journals with illustrations inspired by each challenge Each weekly challenge was introduced with a poem by Pam Shipman.

Jennifer Hope took Betty and Joanne through her journey of techniques of line and shape and form and colour and styles. We were also treated to Julie's demonstration of Mark Making and the development of a mark making brush using found objects.

It was a lovely morning to get together with like minded artists and partake of a scrumptious antipasto. Meeting the artists brought the exhibition to life. I thoroughly recommend attending Meet The Artist openings.

# At The Condensery

SOMERSET REGIONAL ART GALLERY 29 FACTORY ROAD TOOGLOOLAWAH QLD  
MON-FRI 9-5 WEEKENDS: 10-4 CLOSED: GOOD FRIDAY, CHRISTMAS DAY AND NEW YEARS DAY

## WITHIN WALKING DISTANCE

HAYLEY MEGAN FRENCH

10 Sep – 20 Nov 2022

Hayley Megan French paints the streets of suburbia, homes, yards, and memories of landscapes. Her paintings are a form of meditation on the details that create our sense of home and neighbourhood. This growing body of work engages in a conversation about what suburbia means in the Australian imagination. At the centre of this conversation is home.

## BRAVE GIRL: THE WARRIOR

KARIKE ASHWORTH

10 Sep – 20 Nov 2022

Inspired by cosplay and comic strip characters, Karike Ashworth's persona Brave Girl considers how, why and when labels like 'brave' get assigned to women, girls and to popular culture heroines.

Brave Girl: The Warrior 2018 'documents' Brave Girl's running tour through regional Queensland between Mount Glorious and Mooloolaba, via Esk, Kilcoy and Toogoolawah.

The film parodies the Forrest Gump running sequence from the famous 1994 Robert Zemeckis film of the same name. As Brave Girl recreates this legendary film sequence, she runs as the ironic embodiment of ideal virtues for postfeminist women: hyper-femininity, strength, ambition, beauty, health, good grooming, sociability, self-assuredness, and optimism.

Except that, instead of doing so virtuously, in a way that is acceptable and worthy of well-socialised women, Brave Girl is absurdly running for no particular 'worthy' reason at all – besides, of course, because it is "brave to be fast!"

**Condensery Gallery Manager Contact: Rachael Arndt**  
[mail@somerset.qld.gov.au](mailto:mail@somerset.qld.gov.au)

### Role Descriptions

### CONTACT LIST

FACILITATES AND GUIDES SASI

President: Shirley Gregor [president@sasiart.com.au](mailto:president@sasiart.com.au)

HELPS TO FACILITATE  
AND GUIDES SASI

Vice President: Jenny Connor [vicepresident@sasiart.com.au](mailto:vicepresident@sasiart.com.au)

MAIN CONTACT POINT FOR INQUIRIES

Secretary: Shirley Gregor [secretary@sasiart.com.au](mailto:secretary@sasiart.com.au)

MANAGES SASI FINANCES

Treasurer: Nelle Smith [treasurer@sasiart.com.au](mailto:treasurer@sasiart.com.au)

CURATES NEW EXHIBITION 9AM  
FIRST THURSDAY OF EVERY  
ALTERNATE MONTH

Glen Rock Gallery Coordinator: Jan Godfrey  
[glenrockgallery@sasiart.com.au](mailto:glenrockgallery@sasiart.com.au)

MANAGES WORKSHOPS FROM ARTIST  
FIRST CONTACT TO OUTCOME REPORT

Workshop Coordinator: Joanne Hegney  
Workshop Assistants: Barbara Bingham, Gwen Litfin.

MANAGES SASI STALLS FROM BOOKING  
STALL SITE TO PACKUP

Stalls Coordinator: Sue Howard 0499700208 or [sihoward@bigpond.com](mailto:sihoward@bigpond.com)  
Notify Sue if you wish to sell or volunteer on a SASI stall

PRODUCES NEWSLETTER RECEIVES ARTICLES,  
UPDATES, ADS & PHOTOS FROM MEMBERS AND  
KEY PERSONNEL

Newsletter Editor: Cameron Maine [newsletter@sasiart.com.au](mailto:newsletter@sasiart.com.au)

COORDINATES PHOTOGRAPHY GROUP,  
WORKSHOPS AND ACTIVITIES

Photography Group Coordinator: Phil Lister [plphotographix@gmail.com](mailto:plphotographix@gmail.com)

COORDINATES FERNVALE ARTISTS GROUP,  
WORKSHOPS AND ACTIVITIES

Fernvale Artists Group Coordinator: Sue White  
[suewhite4306@gmail.com](mailto:suewhite4306@gmail.com)

COORDINATES MT BEPPO  
ARTISTS GROUP,

Mt Beppo Artist Group Coordinator: Gwen Litfin  
[gwenethlitfin@gmail.com](mailto:gwenethlitfin@gmail.com)

REGULARLY UPDATES  
SASIART.COM.AU MAIN, GLEN ROCK  
GALLERY, NEWSLETTER,

Website Manager: Nelle Smith [website@sasiart.com.au](mailto:website@sasiart.com.au)

# SASI Members Page

Dedicated to members, for members, from members.

## Recommended by Members



## Ipswich Art Society

### Saturday Morning Casual Painting

SECOND SATURDAY of each MONTH 9.00AM TO 1.00PM

The Old Court House (Ginn street rear entrance) cnr East and Roderick Streets , Ipswich.

Come along to our Untutored Art Group held at the Old Ipswich Courthouse to enjoy some quality time and share ideas and interact with other artists.

Cost: \$5.00 for Members and \$10 for non members with 'join on arrival' facility.  
Coffee/tea is provided , bring your lunch.

## Riot Art and Craft Stores are now stocking quality artist supplies

<https://riotstores.com.au>

A selection of  
**Mont Marte Artist Supplies**  
are available at  
**Toogoolawah**  
**Home Timber and Hardware**  
Contact Donna Phone: 5423 1222  
**Cressbrook News and Stationery**  
Contact Mark or Pauline Phone: 54231396



If you're setting up to photograph something and need flowers to fill in space, or to be a focal point, consider giving Flowers by Felicity a call and discuss your requirements. Located just out of Esk on the Hampton Road.



### Flowers by Felicity

Qualified Florist 25+ Years

Plants, Flowers & Arrangements  
for all occasions



Felicity Maden,  
emervale4@activ8.net.au  
0413 133 168  
#FlowerPower

## We want you to join us!

Would you like to spend a fun morning in the presence of beautiful local art?

The Open Door Gallery at Lowood is run by a wonderful team of volunteers and we would like you to be part of our team.

Open Saturdays and Sundays  
9.30 am to 2.00 pm

For more details please call  
Sue White on 0407 072 926

# GLEN ROCK GALLERY- ESK

explore a new exhibition each month



82 Ipswich Street Esk QLD

## Supporting Local Artists

**Purchase unique gifts**

**Major debit and credit cards accepted**

**Location: Esk Visitors Information Centre**

Open: Tuesday to Friday: 9am – 4pm Weekends 10am – 2pm

Closed Mondays and Public Holidays



Supported by Somerset Council, Tourism Staff and the friendly EVIC Volunteers.  
Exhibition curation by Somerset Art Society Inc



WHAT'S UP AT

# **GLEN ROCK GALLERY- ESK**

**SUSAN WELLINGHAM  
& SUE HOWARD**

**7 October 2022 to 2 November 2022**

Discover the gallery and it's treasures

Esk Visitors Information Centre 82 Ipswich St Esk QLD

Open Tuesday to Friday: 9am - 4pm      Weekends: 9am - 2pm

Closed: Monday & Public Holidays



WHAT'S UP AT

# **GLEN ROCK GALLERY- ESK**

**SUSAN WELLINGHAM  
& SUE HOWARD**

**7 October 2022 to 2 November 2022**

Discover the gallery and it's treasures

Esk Visitors Information Centre 82 Ipswich St Esk QLD

Open Tuesday to Friday: 9am - 4pm      Weekends: 9am - 2pm

Closed: Monday & Public Holidays