



# Somerset Art Society Inc

Supporting the arts and artists in the Somerset Region SE Qld

## Newsletter May 2022

### This issue:

#### Presidents Report

PAGE 01

#### Calendar

PAGE 02

#### Artists Group

##### Info and Happenings

PAGE 03

#### Glen Rock Gallery

PAGE 04

#### SASI Workshop & Events

PAGE 05

#### Somerset Celebrates Art

PAGE 06

#### The Condensery Somerset Regional Art Gallery

##### SASI Contacts

PAGE 07

#### Members Page

PAGE 8

#### Photography Tutorial

PAGE 9

### President's Ponderings

Hi SASI friends,

Another month has passed and I am here writing to you in my plant garden which I recently redid after being stuck in isolation for a few weeks. Many of you heard that my Grandad and family caught covid. Thankfully we have got through to the otherside but it was quite the journey! Thank you so much to the wonderful Mount Beppo group who sent a peace lily plant to brighten up our time. Very much appreciated.

So we are approaching May now, almost half way through the year.. I don't know about you but it's seem to have flown passed me pretty quickly. It can be a good time to reflect on what has sprouted and flourished during this time as we begin to plant new seeds and ideas for the coming months. What's worked? What hasn't? What has been exciting you? It's not always easy so just know that no matter how challenging things can seem there is always support around you in one form or another. Whether it's the ground underneath your feet, hugs from relatives, fluffy friends or the colours in your watercolour palette. SASI strives to create the comfort of community and shared experience. You are always welcome so reach out and connect with each other, you never know what might come of it. We are here for each other.

April 2022, you still have a chance to see Jenny Connor's exhibition till 4th May at Glen Rock Gallery. It's always wonderful to see the vast array of talent we have in SASI! We continue to have exciting plans announced for Somerset Celebrates Art so check out all that is on offer in the area and see what you can get involved in.

More to be announced in the Newsletter.

As always many blessings and light to you all.

Ze Sherpa



# CALENDAR OF EVENTS:

What's on and What's coming up



## Happening This Month

### Glen Rock Gallery

Deb Dawkings & Coal Creek Pottery

Showing 6th May to 1st June

### Hampton Festival

15th May, more info [Here](#)

(<https://www.hamptonfestival.com/>)

### Esk Show, Art Competition

20th - 21st May, More Info [Here](#)

(<https://www.eskshow.com.au/>)

### Lockyer Vally Foothills Art Show

27th May, more info at

(<https://www.facebook.com/WithcottCommunityMarkets/>)

## On the Horizon

### Celebrate Art In June with SASI Workshops!

Highlights Include

Week 1 (4th - 5th), Basketry with Jenny Conner

Week 2 (11th - 12th) Traditional Weaving with Jody Rallah

Week 3 (18th - 19th) Pen and Wash with Jan Lawnikanis

(The Pen and Wash workshop is now fully booked)

Week 4 (24th - 26th) Learning Acrylics with Jenny Kelly

Book early as some workshops have limited space!

More information and registrations [Here](#)

(<https://www.sasiart.com.au/art-in-june-2022>)

### Brisbane Air Show

2nd-3rd July more info at,

(<https://www.brisbaneairshow.com.au>)

INTERESTED IN JOINING SASI?  
NEW AND CONTINUEING MEMBERS:  
PLEASE COMPLETE THE [JOIN SASI](#)  
FORM ON THE WEBSITE

COST: \$20

[Join SASI](#)

[Link to membership page](#)

# ARTISTS GROUPS INFO & CALENDAR EVENTS

## Mt Beppo Happenings

The Mt Beppo group did not meet on 13 April, as a number of people were away. However, Mike Donnarumma kindly gave a tutorial at his home in Toogoolawah on his "space paintings". Betty William's visiting grandson Rohan benefited, along with Betty and Shirley Gregor, and Rohan was able to produce some striking artwork



## Fernvale Artists Group Info

The Fernvale Artists meet on Wednesday mornings from 9.30am until 12.30pm at the Fernvale Community Hall in Banks Creek Road, Fernvale, or at the Lowood Open Door Gallery, to paint and to share their love of art.

All are members of SASI. Anyone in the local area is absolutely welcome to join them, or just to visit.

Contact: Sue White on 0407 072 926.

## Mount Beppo Artists Group Info

The Mount Beppo Artists meet on Wednesday mornings from 9am until 1pm at Mount Beppo Community Hall,  
Address: 916 Mount Beppo Rd, Mount Beppo QLD.

The artists use a range of mediums and share their knowledge and skills in a supportive environment. New members warmly welcomed. Contact: Gwen 0437 197 381

## SASI Photography Group Info

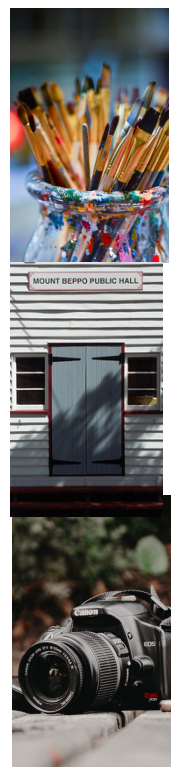
The photography group have a fun time learning to take better photographs. New members are very welcome. Activities, including outings and talks, are advertised through the SASI newsletter. Due to Covid issues and travel plans by Phil, Photo workshops will be on hold until July.

Workshops planned for the latter half of the year include:

1. Managing a photo workflow on your computer, including getting photos onto your computer, software for editing, backing up your photos and more
2. Landscape Photography - the how, what, where, when and why of getting great landscape images and
3. A couple of outings if we have enough interest.

As always, if anyone has a request for a particular topic, please email me and let me know.

For further information please see the SASI Photography Group page  
<https://www.sasiart.com.au/sasi-photography-group> or email Phil Lister  
plphotographix@gmail.com





# Glen Rock Gallery- Up and Coming

ESK VISITOR INFORMATION CENTRE 82 IPSWICH STREET, ESK, QLD 4312  
TUES-FRI 9-4 WEEKENDS: 10-2 CLOSED: MONDAYS AND PUBLIC HOLIDAYS

## What's Up at Glen Rock

### Deb Dawkings

FRI 6TH MAY - WED 1ST JUNE

### Meet The Artists at Glen Rock Gallery

FRI 6TH MAY AT 09:00

## Deb Dawkings - Coal Creek Pottery Exhibit

FRIDAY 6TH MAY - WEDNESDAY 1ST JUNE

High on a hill overlooking Coal Creek, stands the Coal Creek Pottery, where Deborah Dawkings 'potters' with clay. Inspired by the countryside and colours of Coal Creek she connects with nature to create. Even though each of her pieces have an earthy, maybe even sculptural feel, they also have a practical purpose.

Through her studio where classes and open sessions are available, she has harnessed arts ability to connect creatives and the broader community, nurturing an atmosphere for all to enjoy and flourish.

This exhibition has brought together members of the thriving Coal Creek Pottery community which you too can become a part of. Each artist has created with their own artistic flair resulting in some amazing pieces.

Fellow creatives exhibiting are, Sandy Warren, Julie Buckworth and Kahli Dawkings, all very talented artists and valuable members of the Coal Creek Pottery community.

### Fri 3 June - Wed 6 July Somerset Celebrates Art

Artwork Delivery:

9am Thurs 2 June 2022

Artwork Collection:

9am Thurs 7 July 2022

Contact:

[glenrockgallery@sasiart.com.au](mailto:glenrockgallery@sasiart.com.au)

### Fri 8 July - Wed 3 Aug Fernvale Artists

Artwork Delivery:

9am Thurs 7 July 2022

Artwork Collection:

9am Thurs 4 Aug 2022

Contact:

[glenrockgallery@sasiart.com.au](mailto:glenrockgallery@sasiart.com.au)

### Fri 5 Aug - Wed 31 Aug Mt Beppo Artists

Artwork Delivery:

9am Thurs 4 Aug 2022

Artwork Collection:

9am Thurs 30 Aug 2022

Contact:

[glenrockgallery@sasiart.com.au](mailto:glenrockgallery@sasiart.com.au)

### Fri 2 Sept - Wed 5 Oct Artists of Crows Nest

Artwork Delivery:

9am Thurs 1 Sept 2022

Artwork Collection:

9am Thurs 6 Oct 2022

Contact:

[glenrockgallery@sasiart.com.au](mailto:glenrockgallery@sasiart.com.au)

### Curator Teams

Jan Godfrey & Sue Howard

Ron Orr & Sue White

Note: the Gallery is closed on Artwork  
Delivery and Collection days



View the full exhibition at Glen Rock Gallery, Esk Visitor Information Centre 82 Ipswich Street, Esk, QLD 4312 Tues-Fri 9-4 Weekends: 10-2

Can't make it to the gallery?

To view a small selection of the exhibited works visit the Glen Rock Gallery website page <https://www.sasiart.com.au/glen-rock-gallery>

# SASI Workshops & Events

## Workshops On the Drawing Board:

**Contact:**  
**SASI Workshop**  
**Coordinator**  
[workshop@sasiart.com.au](mailto:workshop@sasiart.com.au)

**Contact SASI to**  
**recommend a**  
**Workshop with a**  
**particular tutor**  
**and/or in a specific**  
**media**

**Artists are most**  
**welcome to apply**  
**to present a**  
**workshop**

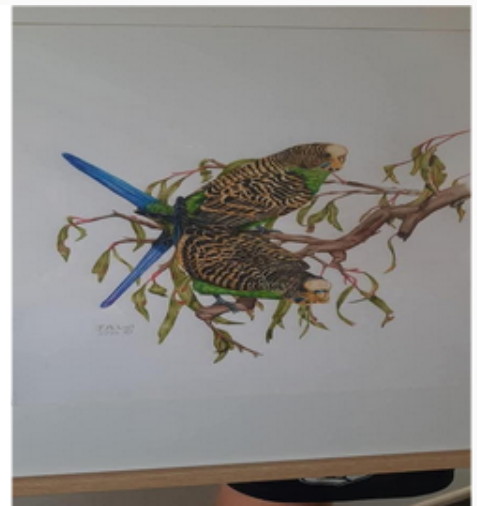
## Open Door Gallery, Lowood with Workshops

The April exhibition at the Lowood Open Door Gallery, a display of the work of the Lowood High School students, has been very well received – lots of sales and lots of visitors, especially at the official opening on Saturday 16th April.

Encouraged and led by art teacher Kerry Hetherington, the school's 'Hands on Learning' students each contributed a delightful painting, and the art class students all exhibited excellent work. Above all, outstanding young artist Jack Lait's beautiful bird paintings show promise of a wonderful future.

The gallery and the school both hope that this students' exhibition can become an annual event.

It will be followed, in May, by an exhibition of the work of the school's art teachers.



Another workshop, this time 'Plant Print Dyeing on Paper' conducted by Cassandra Hodgin, was enjoyed on Sunday 10 April, with some lovely results, and on Saturday 28 May Karen Leahy will hold a resin workshop, before the June 'Somerset Celebrates Art' events begin. On Thursday 19 May a Cancer Council 'BIGGEST MORNING TEA' will be held at the gallery. All are welcome to drop in for a cuppa and cake to help raise money for Cancer Council on behalf of our family and friends impacted by Cancer. Gold coin donation appreciated, or donate online at:

<https://www.biggestmorningtea.com.au/fundraisers/OpenDoorGalleryLowood/biggest-morning-tea-qld>

## ***An Overview of Art events in Somerset June 2022***

*SASI has joined with local Art Groups, Community Groups, Art Galleries and Somerset Council to celebrate Somerset and its vibrant artistic communities. Join the celebration each weekend in June with workshops, exhibitions, market stalls and performances in towns and villages throughout Somerset.*

***For more information on what's coming and how to book visit***

***<https://www.sasiart.com.au/art-in-june-2022>***

- Week 1** Fernvale and Lowood Celebrate Art in June  
Saturday 4 June 2022 and Sunday 5 June 2022  
Open Door Gallery Exhibition and  
Workshops: Sip and Paint, Basketry, Botanical art
- Week 2** Toogoolawah Celebrates Art in June  
Saturday 11 June 2022 Sunday 12 June 2022  
Gallery Exhibitions at Two Galahs and The Condensery ,  
Workshops: Indigenous Weaving
- Mount Beppo Celebrates Art in June  
Sunday 12 June 2022  
Look See Try Workshops in the Historic Mt Beppo Community Hall  
Art stall, Lunch time Performance
- Coal Creek Celebrates Art in June  
Saturday 11 June 2022 Sunday 12 June 2022  
Coal Creek Gallery Pottery Studio& Café  
Sunday Workshop: Make your own essential oil diffuser pendant
- Week 3** Somerset Celebrates Art in Esk  
Saturday 18 June 2022 and Sunday 19 June 2022  
Glen Rock Gallery Gallery Exhibition, SASI Art Market Stall and  
Pen & Watercolour Workshop.  
Workshop Registration <https://www.sasiart.com.au/workshops>  
Story telling through movement and performance workshop  
for the young and young at heart.
- Week 4** Somerset Celebrates Art in Kilcoy  
Friday 24 June - Sunday 26 June 2022  
Frocktails, Art Fair, Sketchers in Yowie Park and Workshops
- Celebration Finale  
Somerset Celebrates Art in Linville  
Sunday 26 June 2022 Contact: Linville Progress Association



# At The Condensery

SOMERSET REGIONAL ART GALLERY 29 FACTORY ROAD TOOGOOLOOAWAH QLD  
MON-FRI 9-5 WEEKENDS: 10-4 CLOSED: GOOD FRIDAY, CHRISTMAS DAY AND NEW YEARS DAY

## A Slow Churn

In the face of a changing climate, global shifts in agriculture and food production and the increased recognition of traditional land management strategies, artists in Slow Churn explore the delicate interactions and interdependencies that exist between us and our natural world.

With the immediate needs of humanity at the core of many actions and policies that govern the environment, this exhibition considers the impacts of this human centric pace by turning to the adaptations and transformations of our insect life, soil, waterways, skylscapes and produce for alternative perspectives.

CURATED BY OLIVIA WELCH & RACHEL ARNDT  
Open From 9th of April until 3rd of July.



Condensery Gallery Manager Contact: Rachael Arndt  
mail@somerset.qld.gov.au

### Role Descriptions

FACILITATES AND GUIDES SASI

HELPS TO FACILITATE  
AND GUIDES SASI

MAIN CONTACT POINT FOR INQUIRIES

MANAGES SASI FINANCES

CURATES NEW EXHIBITION 9AM  
FIRST THURSDAY OF EVERY  
ALTERNATE MONTH

MANAGES WORKSHOPS FROM ARTIST  
FIRST CONTACT TO OUTCOME REPORT

MANAGES SASI STALLS FROM BOOKING  
STALL SITE TO PACKUP

PRODUCES NEWSLETTER RECEIVES ARTICLES,  
UPDATES, ADS & PHOTOS FROM MEMBERS AND  
KEY PERSONNEL

COORDINATES PHOTOGRAPHY GROUP,  
WORKSHOPS AND ACTIVITIES

COORDINATES FERNVALE ARTISTS GROUP,  
WORKSHOPS AND ACTIVITIES

COORDINATES MT BEPPO  
ARTISTS GROUP,

REGULARLY UPDATES  
SASIART.COM.AU MAIN, GLEN ROCK  
GALLERY, NEWSLETTER,

### CONTACT LIST

President: Ze Sherpa president@sasiart.com.au

Vice President: Jenny Connor vicepresident@sasiart.com.au

Secretary: Shirley Gregor secretary@sasiart.com.au

Treasurer: Nelle Smith treasurer@sasiart.com.au

Glen Rock Gallery Coordinator: Jan Godfrey  
glenrockgallery@sasiart.com.au

Workshop Coordinator: <Position Open> if you're interested please  
contact the Secretary.  
Workshop Assistants: Barbara Bingham, Gwen Litfin.

Stalls Coordinator: Sue Howard 0499700208 or sihoward@bigpond.com  
Notify Sue if you wish to sell or volunteer on a SASI stall

Newsletter Editor: Cameron Maine newsletter@sasiart.com.au  
Proofreader for this edition: Linda Maine

Photography Group Coordinator: Phil Lister plphotographix@gmail.com

Fernvale Artists Group Coordinator: Sue White  
suewhite4306@gmail.com

Mt Beppo Artist Group Coordinator: Gwen Litfin  
gwenethlitfin@gmail.com

Website Manager: Cameron Maine website@sasiart.com.au

# SASI Members Page

Dedicated to members, for members, from members.

## Recommended by Members



### Ipswich Art Society

#### Saturday Morning Casual Painting

SECOND SATURDAY of each MONTH 9.00AM TO 1.00PM

The Old Court House (Ginn street rear entrance) cnr  
East and Roderick Streets , Ipswich.

Come along to our Untutored Art Group held at the Old  
Ipswich Courthouse to enjoy some quality time and  
share ideas and interact with other artists.

Cost: \$5.00 for Members and \$10 for non members  
with 'join on arrival' facility.  
Coffee/tea is provided , bring your lunch.

**Riot Art and Craft Stores**  
**are now stocking**  
**quality artist supplies**  
<https://riotstores.com.au>

A selection of  
**Mont Marte Artist Supplies**  
are available at  
**Toogoolawah**  
**Home Timber and Hardware**  
Contact Donna Phone: 5423 1222  
**Cressbrook News and Stationery**  
Contact Mark or Pauline Phone: 54231396



#### Photography/Art Suppliers

If you're setting up to photograph something  
and need flowers to fill in space, or to be a  
focal point, consider giving Flowers by  
Felicity a call and discuss your requirements.  
Located just out of Esk on the Hampton Road.



**Flowers by Felicity**  
Qualified Florist 25+ Years  
Plants, Flowers & Arrangements  
for all occasions

Felicity Maden  
emervale4@activ8.net.au  
0413 133 168  
#FlowerPower

### We want you to join us!

Would you like to spend a fun morning in  
the presence of beautiful local art?

The Open Door Gallery at Lowood is run by  
a wonderful team of volunteers and we  
would like you to be part of our team.

Open Saturdays and Sundays  
9.30 am to 2.00 pm

For more details please call  
Sue White on 0407 072 926



# Photography Group Tutorial - Understanding Lenses Part 1

## Focal Length & Aperture

Photographers often agonise over their next lens purchase, "Which focal length should I get, 24 f1.4, 85 1.2, 200 2.8...." and the list goes on!

Lets look at what these numbers mean using this lens as an example - the trusted and often standard lens on cameras, the 50mm f1.8.

50mm is the focal length and f1.8 is the maximum aperture of the lens. The focal length, 50mm in this case, equates to the field of view of the lens when looking through the viewfinder and generally represents what we, as humans, usually see normally, excluding peripheral vision. A 24mm lens (wide angle) has a wider field of view and takes in more of the scene, favoured by landscape photographers. A 200mm lens (telephoto) has a narrower field of view and is favoured by sports and portrait photographers allowing the photographer to get "closer" to the subject.

The "f" number indicates how "fast" a lens is, that is, how much light it can let through to the sensor or film. Looking through the viewfinder using an f1.8 lens will be much brighter than looking through a lens with a maximum aperture of f5.6 for example. Oh, "f" does not stand for "fast" by the way. The f number is actually the ratio between the physical opening size of the aperture measured in mm and the focal length of the lens system. For example, an 85mm f1.2 lens is "faster" than an 85mm f1.8. The 85mm f1.2 is considerably more expensive and physically larger and heavier as well due to the larger glass elements used in its construction compared to the f1.8 version.

Now, this isn't to be confused with the different aperture settings on the lens, the f1.8 on our 50mm example shows how wide the aperture can go. We've seen that the aperture is the physical opening in the lens that light goes through. The size of the aperture opening in the lens can be adjusted by a set of very thin metal blades which move to specific settings, these are called f-stops. The aperture settings on the 50mm lens, and most other lenses as well, can be changed through a whole range of settings - 1.8 (largest opening), 2.0, 2.8, 4.0, 5.6, 8, 11, 16 and 22 (smallest opening). What this allows the user to do is set the Depth of Field, how much of the scene is in focus. A setting of f1.8 (called "wide open") will give a narrow depth of field while a setting of f11 (referred to as "stopping down") will give a wider depth of field resulting in more of the scene being in focus.

If you have an old manual lens, it will most likely have a movable ring on the lens which adjusts the aperture mechanically. Modern cameras usually have a dial or wheel on the camera body somewhere which can change the aperture electronically.

In Part 2 I'll look more at controlling depth of field. I hope this clarifies what these numbers mean and, as usual, if you have any questions feel free to ask.

All the best

Phil